

Архангельск (8182)63-90-72
Астана (7172)727-132
Астрахань (8512)99-46-04
Барнаул (3852)73-04-60
Белгород (4722)40-23-64
Брянск (4832)59-03-52
Владивосток (423)249-28-31
Волгоград (844)278-03-48
Вологда (8172)26-41-59
Воронеж (473)204-51-73
Екатеринбург (343)384-55-89
Иваново (4932)77-34-06

Ижевск (3412)26-03-58
Иркутск (395)279-98-46
Казань (843)206-01-48
Калининград (4012)72-03-81
Калуга (4842)92-23-67
Кемерово (3842)65-04-62
Киров (8332)68-02-04
Краснодар (861)203-40-90
Красноярск (391)204-63-61
Курск (4712)77-13-04
Липецк (4742)52-20-81
Киргизия (996)312-96-26-47

Магнитогорск (3519)55-03-13
Москва (495)268-04-70
Мурманск (8152)59-64-93
Набережные Челны (8552)20-53-41
Нижний Новгород (831)429-08-12
Новокузнецк (3843)20-46-81
Новосибирск (383)227-86-73
Омск (3812)21-46-40
Орел (4862)44-53-42
Оренбург (3532)37-68-04
Пенза (8412)22-31-16
Казахстан (772)734-952-31

Пермь (342)205-81-47
Ростов-на-Дону (863)308-18-15
Рязань (4912)46-61-64
Самара (846)206-03-16
Санкт-Петербург (812)309-46-40
Саратов (845)249-38-78
Севастополь (8692)22-31-93
Симферополь (3652)67-13-56
Смоленск (4812)29-41-54
Сочи (862)225-72-31
Ставрополь (8652)20-65-13
Таджикистан (992)427-82-92-69

Сургут (3462)77-98-35
Тверь (4822)63-31-35
Томск (3822)98-41-53
Тула (4872)74-02-29
Тюмень (3452)66-21-18
Ульяновск (8422)24-23-59
Уфа (347)229-48-12
Хабаровск (4212)92-98-04
Челябинск (351)202-03-61
Череповец (8202)49-02-64
Ярославль (4852)69-52-93

<https://tsurumi.nt-rt.ru/> || tmy@nt-rt.ru

SERIES TVM 50Hz

VERTICAL MULTISTAGE
IN-LINE PUMPS



Vertical Multistage In-line Pumps

1. Applications

TVM vertical multistage in-line stainless steel pumps are designed for the following applications:

a. Pumped Liquids

Thin, non-explosive liquids, not containing solid particles. The liquid must not attack the pump materials chemically. When pumping liquids with a density or viscosity higher than that of water, motor with correspondingly higher outputs must be used, if required.

b. Application

- Municipal water supply and pressure boosting
- Domestic water supply
- Boiler feed and condensate systems
- Cooling water systems
- Irrigation and dewatering
- Fire fighting
- Washing plants and washdown

2. Model Code

TVM (S) 200 - 40 2A - B

- Name of Series: TVM (Vertical multistage stainless steel pumps)
- Frequency: Blank = 50Hz, S = 60Hz
- Nominal flow in m³/h
- Number of stage x 10
- 2 small impeller A
- 1 small impeller B

3. Technical Data

a. Ambient Temperature

Maximum: +40°C

b. Liquid Temperature

Standard design: -15°C to + 90°C (Max)

For hot water design: -15°C to +120°C

c. Min Suction Pressure

According to NPSH add 0.5m water head.

d. Electric Motor standard be supplied as:

50Hz, single phase 220V-240V or three phase

380V-415V, aluminum casing, IP55, class F.

60Hz, single phase 110V or three phase 220V,

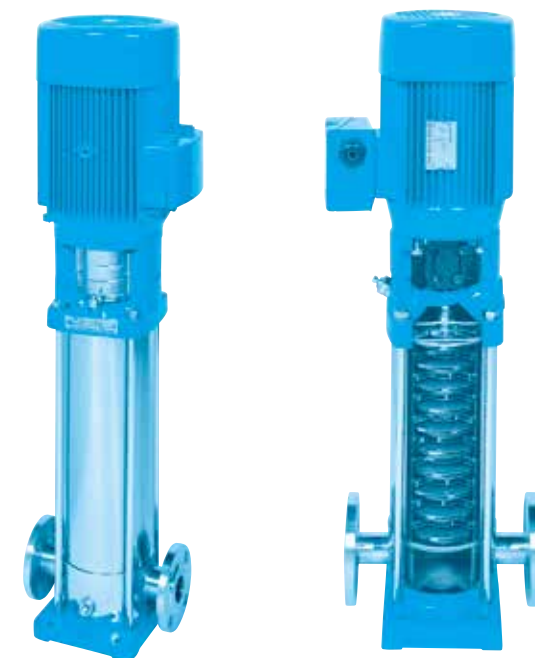
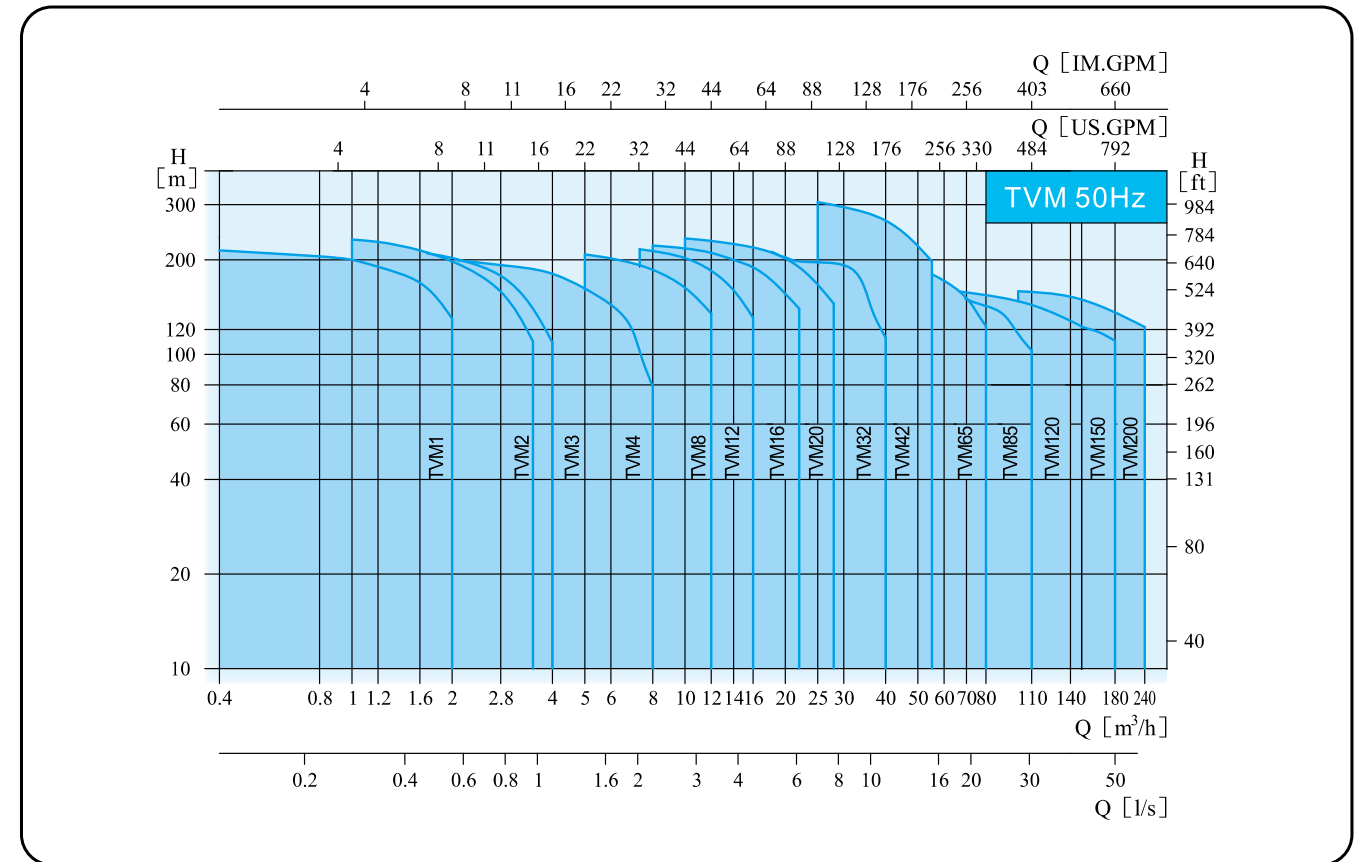
aluminum casing, IP55, class F.

NEMA standard motor on request

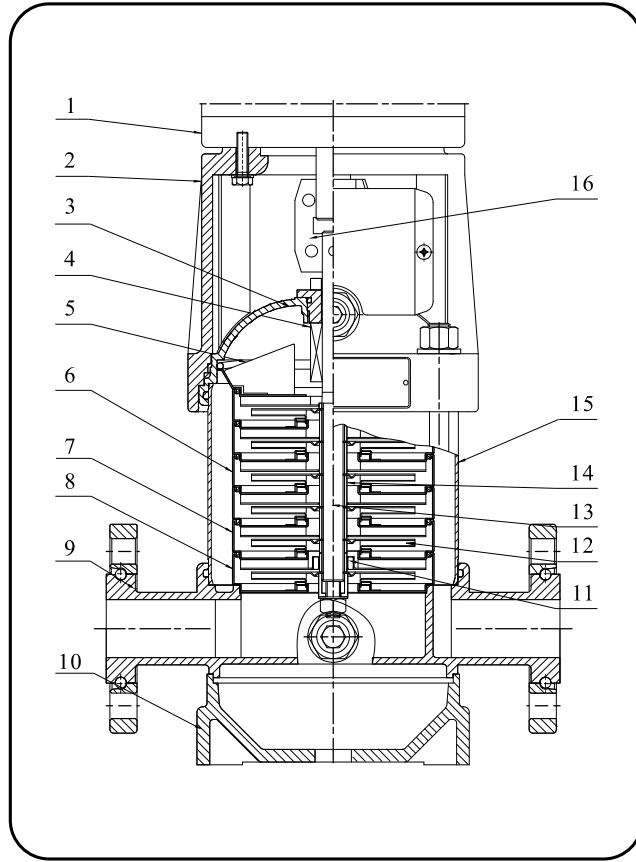
e. Pump's material can be supplied in 304, 316 or

316L stainless steel.

Selection Charts



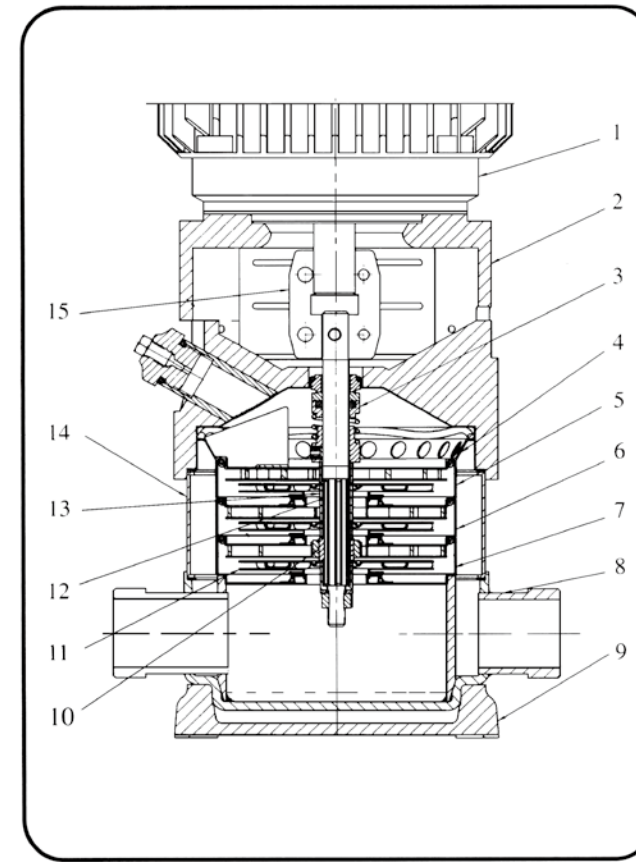
General Arrangement Drawing



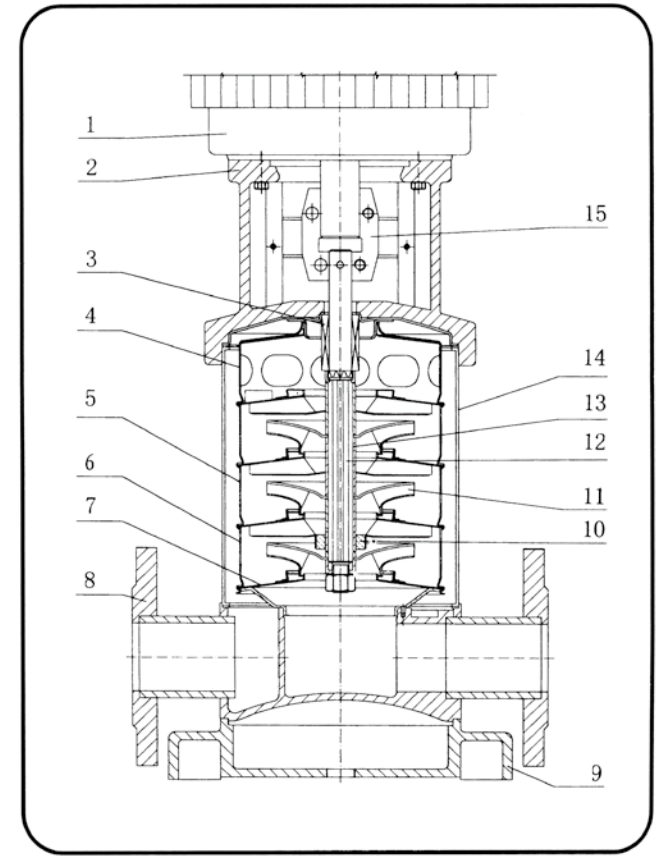
TVM1,3

| Item No | Name | Material | AISI/ASTM |
|---------|--------------------------|---------------------------|------------------|
| 1 | Motor | | |
| 2 | Pump head | Cast iron | ASTM25B |
| 3 | Seal base | Stainless steel | AISI304 |
| 4 | Mechanical seal | Tungsten carbide/Graphite | |
| 5 | Top diffuser | Stainless steel | AISI304 |
| 6 | Diffuser | Stainless steel | AISI304 |
| 7 | Support diffuser | Stainless steel | AISI304 |
| 8 | Inducer | Stainless steel | AISI304 |
| 9 | Inlet and outlet chamber | Stainless steel/Cast iron | AISI304/ASTM25B |
| 10 | Base plate | Cast iron | ASTM25B |
| 11 | Bearing | Tungsten carbide | |
| 12 | Impeller | Stainless steel | AISI304 |
| 13 | Shaft | Stainless steel | AISI304/AISI316L |
| 14 | Impeller sleeve | Stainless steel | AISI304 |
| 15 | Cylinder | Stainless steel | AISI304 |
| 16 | Coupling | Carbon steel | |

General Arrangement Drawing



TVM2,4

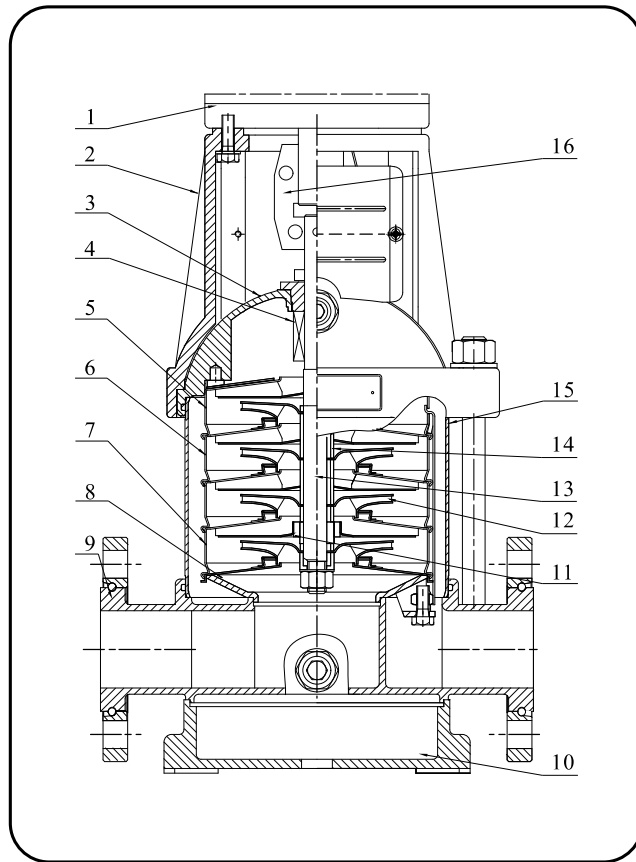


TVM8,16

| Item No | Name | Material | AISI/ASTM |
|---------|--------------------------|---------------------------|-------------|
| 1 | Motor | | |
| 2 | Motor base | Cast iron | ASTM25B |
| 3 | Mechanical seal | Tungsten carbide/Graphite | |
| 4 | Discharge diffuser | Stainless steel | 304 |
| 5 | Support diffuser | Stainless steel | 304 |
| 6 | Diffuser | Stainless steel | 304 |
| 7 | Inducer | Stainless steel | 304 |
| 8 | Suction & discharge head | Stainless steel/Cast iron | 304/ASTM25B |
| 9 | Pump base | Cast iron | ASTM25B |
| 10 | Bearing | Tungsten carbide | |
| 11 | Impeller | Stainless steel | 304 |
| 12 | Shaft | Stainless steel | 304 |
| 13 | Sleeve | Stainless steel | 304 |
| 14 | Cylinder | Stainless steel | 304 |
| 15 | Coupling | Alloy | |
| | Rubber parts | FPM | |

Cast iron suction & discharge head are available for TVM16

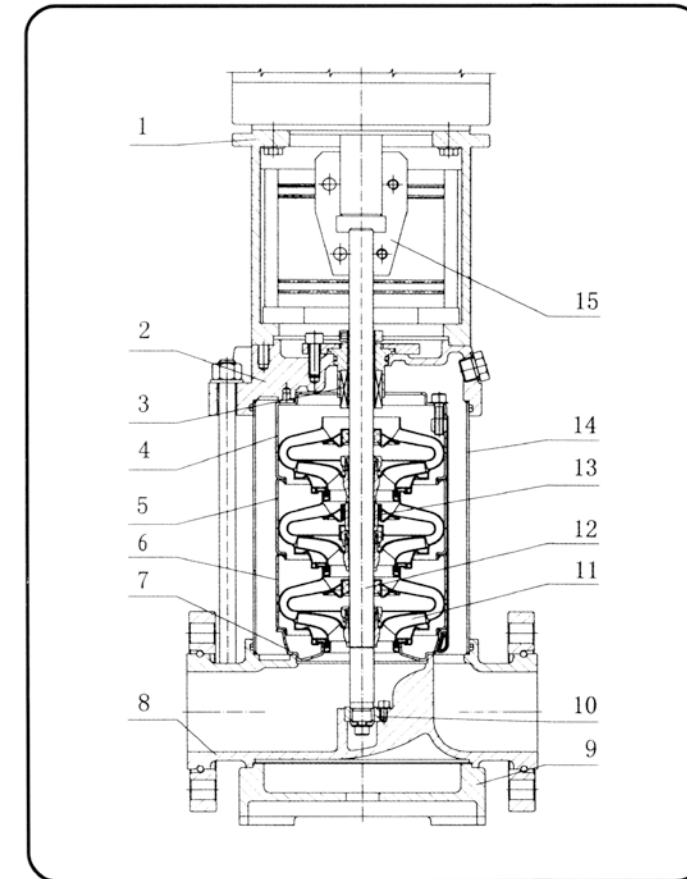
General Arrangement Drawing



TVM12,20

| Item No | Name | Material | AISI/ASTM |
|---------|--------------------------|---------------------------|------------------|
| 1 | Motor | | |
| 2 | Pump head | Cast iron | ASTM25B |
| 3 | Seal base | Stainless steel | AISI304 |
| 4 | Mechanical seal | Tungsten carbide/Graphite | |
| 5 | Top diffuser | Stainless steel | AISI304 |
| 6 | Diffuser | Stainless steel | AISI304 |
| 7 | Support diffuser | Stainless steel | AISI304 |
| 8 | Inducer | Stainless steel | AISI304 |
| 9 | Inlet and outlet chamber | Stainless steel/Cast iron | AISI304/ASTM25B |
| 10 | Base plate | Cast iron | ASTM25B |
| 11 | Bearing | Tungsten carbide | |
| 12 | Impeller | Stainless steel | AISI304 |
| 13 | Shaft | Stainless steel | AISI304/AISI316L |
| 14 | Impeller sleeve | Stainless steel | AISI304 |
| 15 | Cylinder | Stainless steel | AISI304 |
| 16 | Coupling | Carbon steel | |

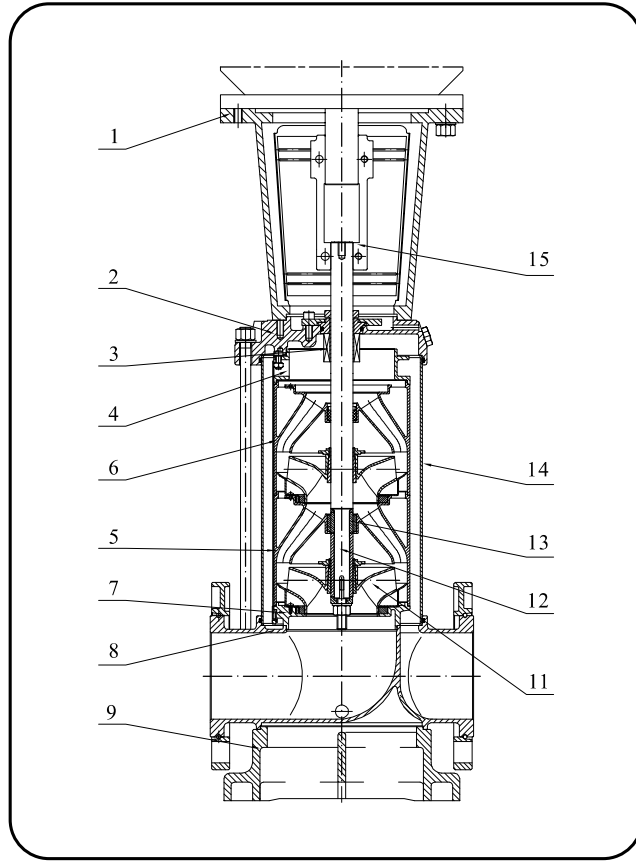
General Arrangement Drawing



TVM32,42,65,85

| Item No | Name | Material | AISI/ASTM |
|---------|--------------------------|----------------------------|--------------|
| 1 | Motor base | Cast iron | ASTM25B |
| 2 | Pump head | Cast iron | ASTM25B |
| 3 | Mechanical seal | Tungsten carbide/Graphite | |
| 4 | Discharge diffuser | Stainless steel | 304 |
| 5 | Support diffuser | Stainless steel | 304 |
| 6 | Diffuser | Stainless steel | 304 |
| 7 | Inducer | Stainless steel | 304 |
| 8 | Suction & discharge head | Stainless steel /cast iron | 304 /ASTM25B |
| 9 | Pump base | Cast iron | ASTM25B |
| 10 | Bearing | Tungsten carbide | |
| 11 | Impeller | Stainless steel | 304 |
| 12 | Shaft | Stainless steel | 304 |
| 13 | Sleeve | Stainless steel | 304 |
| 14 | Cylinder | Stainless steel | 304 |
| 15 | Coupling | Carbon steel | |
| | Rubber parts | FPM | |

General Arrangement Drawing



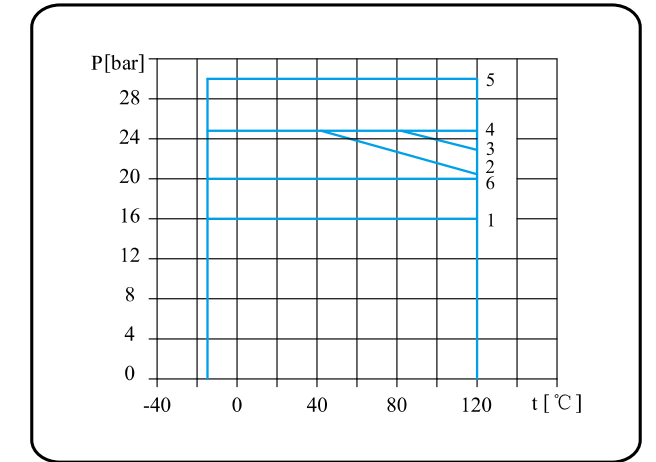
TVM120,150,200

| Item No | Name | Material | AISI/ASTM |
|---------|--------------------------|---------------------------|--------------|
| 1 | Bracket | Cast iron | ASTM25B |
| 2 | Pump head | Cast iron | ASTM80-55-06 |
| 3 | Mechanical seal | Tungsten carbide/Graphite | |
| 4 | Discharge | Stainless steel | AISI304 |
| 5 | Support diffuser | Stainless steel | AISI304 |
| 6 | Diffuser | Stainless steel | AISI304 |
| 7 | Inducer | Stainless steel | AISI304 |
| 8 | Inlet and outlet chamber | Cast iron | ASTM80-55-06 |
| 9 | Base plate | Cast iron | ASTM80-55-06 |
| 11 | Impeller | Stainless steel | AISI304 |
| 12 | Shaft | Stainless steel | AISI304 |
| 13 | Bearing | Tungsten carbide | |
| 14 | Cylinder | Stainless steel | AISI304 |
| 15 | Coupling | Carbon steel | |
| | Rubber parts | NBR | |

Max. Working Pressure

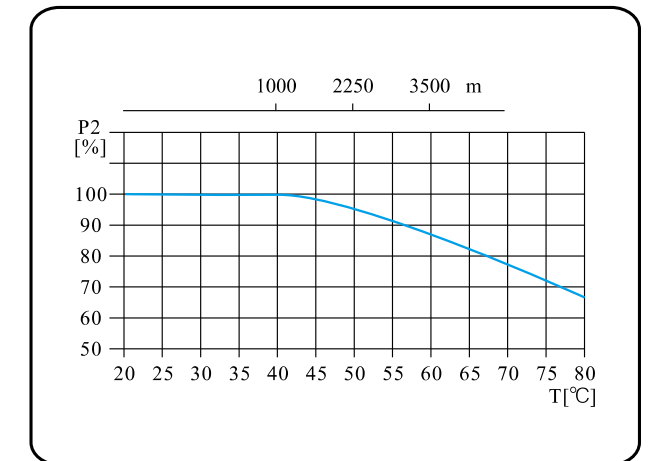
| Model | Curve Number |
|--------------------|--------------|
| TVM1,3 Flange | 2 |
| TVM1,3 Oval Flange | 1 |
| TVM1,3 | 2 |
| TVM12,20 Flange | 3 |
| TVM8 Oval Flange | 1 |
| TVM12,20 | 3 |
| TVM32 | |
| 32-10-1~32-70 | 1 |
| 32-80-2~32-120 | 4 |
| 32-130~32-140 | 5 |
| TVM42 | |
| 42-10-1~42-60 | 1 |
| 42-70-2~42-90 | 4 |
| 42-100-2~42-130-2 | 5 |
| TVM65 | |
| 65-10-1~65-50 | 1 |
| 65-60-2~65-80-1 | 4 |
| TVM85 | |
| 85-10-1~85-50-2 | 1 |
| 85-50~85-60 | 4 |
| TVM120,150,200 | 6 |

The following figure shows the limitation of pressure and temperature, which shall be in the scope as shown in the figure.



Max. Ambient Temperature

When the pump operates under ambient temperature higher than 40° C or under altitude higher than 1000m, because of low air density and poor cooling effects, the motor output power P2 will be decreased to certain extent. If the pump is operated under the above-said conditions, it should be equipped with motor of higher power.



Minimum Inlet Pressure NPSH

In case that the pressure in pump is lower than the steam pressure used to convey liquid, the cavitations will occur. To avoid cavitations, a minimum pressure at the inlet side of the pump shall be guaranteed. The maximum suction stroke can be calculated with following formula:

$$H = P_b \times 10.2 - NPSH - H_f - H_v - H_s$$

P_b = atmosphere pressure [bar]

(Can be set as 1 bar)

In a closed system, P_b means system pressure [bar]

NPSH = Net positive suction head [m]

(It can be read out from the point of possible max. flow rate shown on NPSH curve)

H_f = Pipeline loss at the inler [m]

H_v = Steam pressure [m]

H_s = Safety margin = Minimum 0.5m delivery head

If the calculated result H is positive, the pump may run under the max. Suction stroke H .

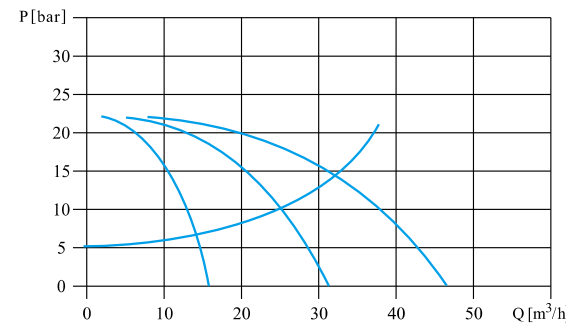
In case the calculated result H is negative, a delivery head of min. Inlet pressure is necessary.

Operation In Parallel

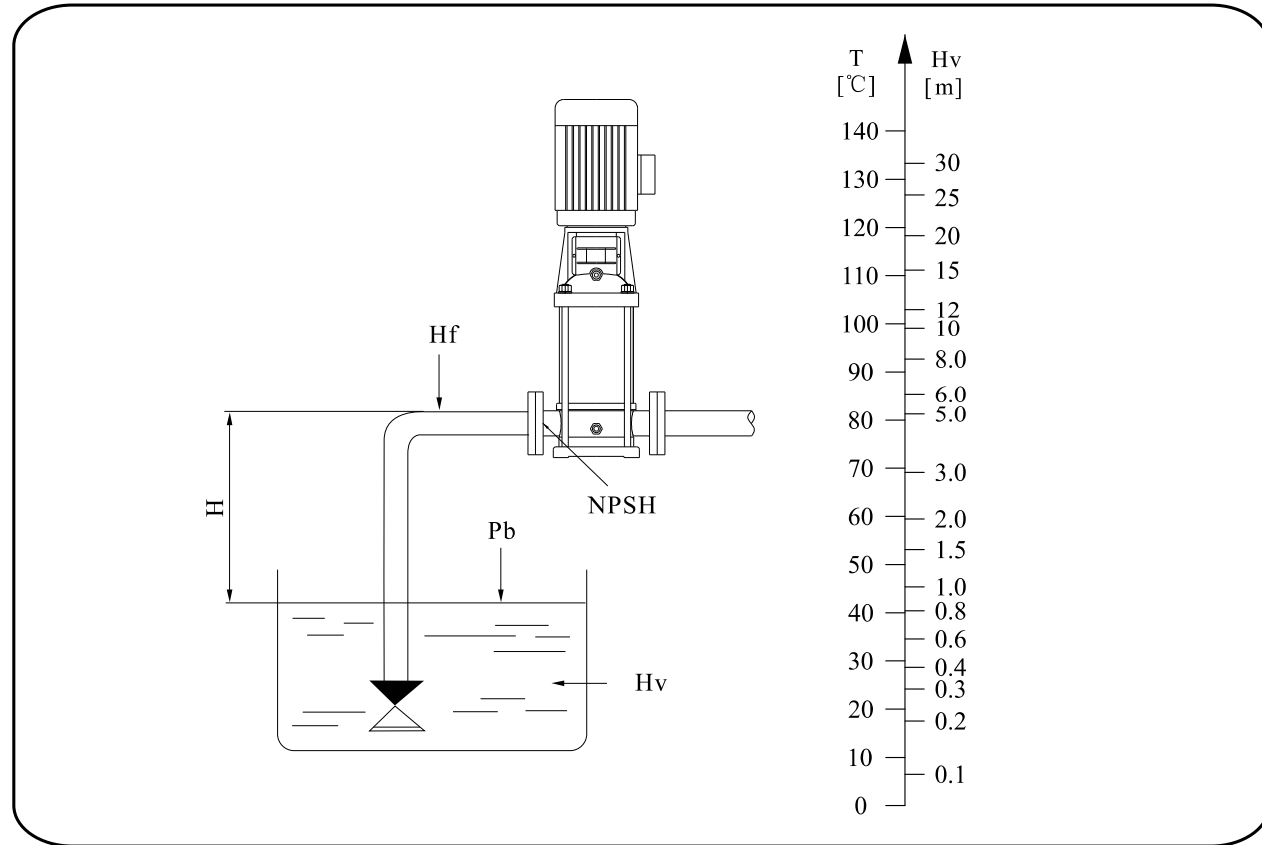
Connecting several pumps in parallel running will benefit much more than running a single large pump.

- Applicable to different working states necessary in a variable flow different working states necessary in a variable flow system.

- Increasing the possibility of water supply when the pump is in failure. Because in case of pump failure, only part of the system flow is effected.



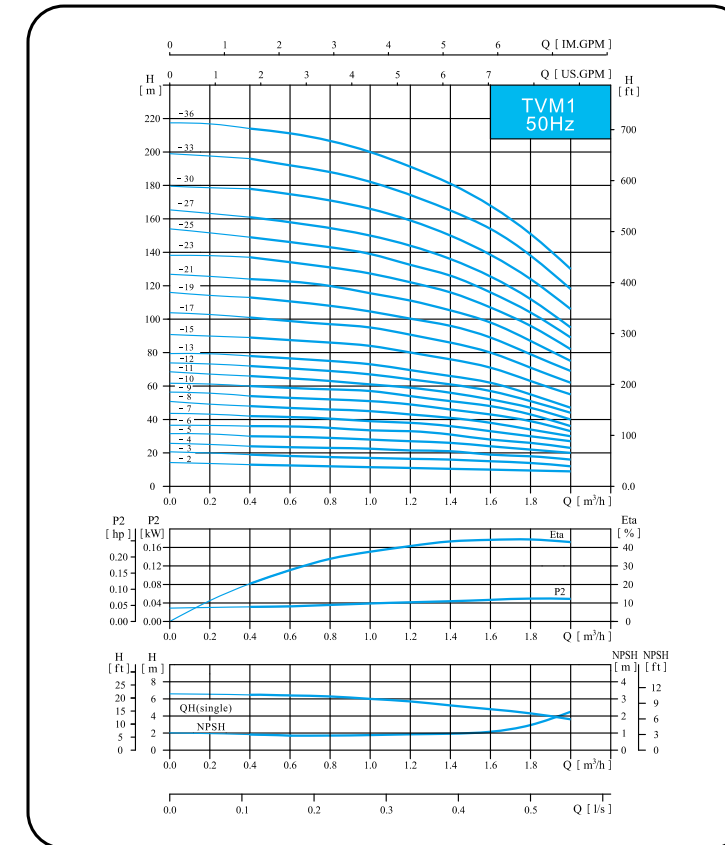
Two pumps or more can be connected in parallel running if necessary.



Check and ensure that the pump is not at cavitations state.

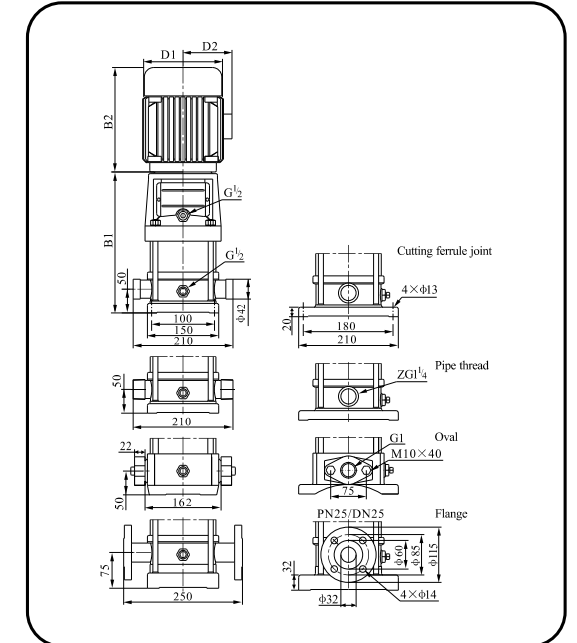
Technical Data

Performance Curve ISO9906 Annex A 2900rpm



TVM 1

Installation Sketch



Performance Table

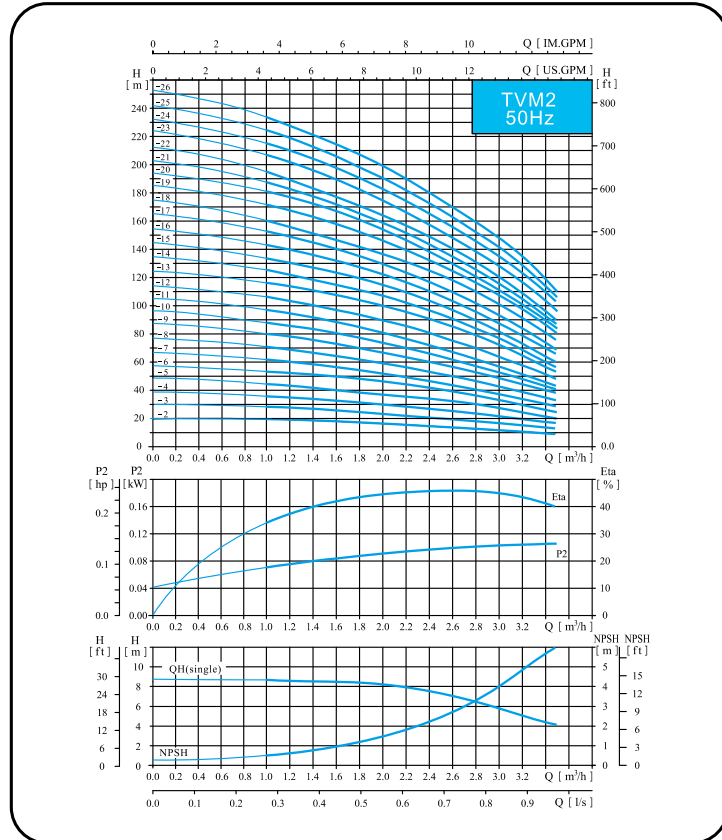
| Model | Driving Motor | | Q (m³/h) | H (m) | | | | | | | | | | | | | | |
|----------|---------------|------|----------|-------|------|------|------|------|------|-----|-----|-----|--|--|--|--|--|--|
| | (kW) | (hp) | | 0.4 | 0.6 | 0.8 | 1.0 | 1.2 | 1.4 | 1.6 | 1.8 | 2.0 | | | | | | |
| TVM1-20 | 0.37 | 0.5 | | 13 | 12.5 | 12 | 11.5 | 11 | 10.5 | 10 | 9.5 | 9 | | | | | | |
| TVM1-30 | 0.37 | 0.5 | | 19 | 18 | 17.5 | 17 | 16.5 | 16 | 15 | 14 | 12 | | | | | | |
| TVM1-40 | 0.37 | 0.5 | | 24 | 23.5 | 23 | 22.5 | 21.5 | 21 | 19 | 18 | 16 | | | | | | |
| TVM1-50 | 0.37 | 0.5 | | 30 | 29.6 | 29 | 28 | 27 | 26 | 24 | 22 | 20 | | | | | | |
| TVM1-60 | 0.37 | 0.5 | | 36 | 35.5 | 35 | 33.5 | 33 | 31 | 28 | 26 | 23 | | | | | | |
| TVM1-70 | 0.37 | 0.5 | | 42 | 41 | 40.5 | 39 | 38 | 36 | 33 | 30 | 27 | | | | | | |
| TVM1-80 | 0.55 | 0.75 | | 48 | 47 | 46 | 45 | 43 | 41 | 38 | 34 | 30 | | | | | | |
| TVM1-90 | 0.55 | 0.75 | | 54 | 53 | 52 | 51 | 49 | 46 | 43 | 39 | 33 | | | | | | |
| TVM1-100 | 0.55 | 0.75 | | 60 | 59 | 58 | 57 | 54 | 51 | 48 | 43 | 36 | | | | | | |
| TVM1-110 | 0.55 | 0.75 | | 66 | 65 | 63 | 61 | 59 | 56 | 52 | 47 | 40 | | | | | | |
| TVM1-120 | 0.75 | 1 | | 72 | 71 | 69 | 67 | 64 | 61 | 57 | 51 | 44 | | | | | | |
| TVM1-130 | 0.75 | 1 | | 78 | 77 | 75 | 73 | 69 | 66 | 62 | 55 | 47 | | | | | | |
| TVM1-150 | 0.75 | 1 | | 89 | 88 | 86 | 84 | 79 | 76 | 71 | 63 | 55 | | | | | | |
| TVM1-170 | 1.1 | 1.5 | | 101 | 99 | 97 | 95 | 89 | 86 | 80 | 71 | 62 | | | | | | |
| TVM1-190 | 1.1 | 1.5 | | 113 | 110 | 108 | 106 | 99 | 96 | 89 | 79 | 69 | | | | | | |
| TVM1-210 | 1.1 | 1.5 | | 124 | 122 | 120 | 117 | 110 | 106 | 98 | 87 | 75 | | | | | | |
| TVM1-230 | 1.1 | 1.5 | | 137 | 133 | 131 | 128 | 121 | 116 | 107 | 96 | 82 | | | | | | |
| TVM1-250 | 1.5 | 2 | | 149 | 145 | 143 | 139 | 131 | 126 | 116 | 104 | 89 | | | | | | |
| TVM1-270 | 1.5 | 2 | | 161 | 157 | 155 | 150 | 141 | 136 | 125 | 112 | 95 | | | | | | |
| TVM1-300 | 1.5 | 2 | | 178 | 175 | 171 | 166 | 157 | 150 | 139 | 124 | 106 | | | | | | |
| TVM1-330 | 2.2 | 3 | | 196 | 192 | 188 | 183 | 173 | 165 | 154 | 137 | 118 | | | | | | |
| TVM1-360 | 2.2 | 3 | | 214 | 210 | 205 | 200 | 190 | 181 | 169 | 151 | 130 | | | | | | |

Size and Weight

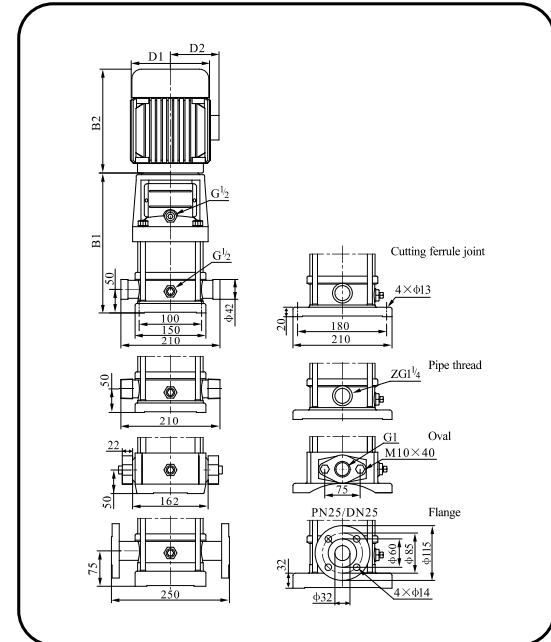
| Model | Size (mm) | | | | | Weight (kg) |
|----------|-----------|-----|-------|-----|-----|-------------|
| | B1 | B2 | B1+B2 | D1 | D2 | |
| TVM1-20 | 258 | 210 | 468 | 148 | 117 | 20 |
| TVM1-30 | 276 | 210 | 486 | 148 | 117 | 20 |
| TVM1-40 | 294 | 210 | 504 | 148 | 117 | 21 |
| TVM1-50 | 312 | 210 | 522 | 148 | 117 | 21 |
| TVM1-60 | 330 | 210 | 540 | 148 | 117 | 22 |
| TVM1-70 | 348 | 210 | 558 | 148 | 117 | 23 |
| TVM1-80 | 366 | 210 | 576 | 148 | 117 | 24 |
| TVM1-90 | 384 | 210 | 594 | 148 | 117 | 25 |
| TVM1-100 | 402 | 210 | 612 | 148 | 117 | 26 |
| TVM1-110 | 420 | 210 | 630 | 148 | 117 | 26 |
| TVM1-120 | 448 | 245 | 693 | 170 | 142 | 29 |
| TVM1-130 | 466 | 245 | 711 | 170 | 142 | 30 |
| TVM1-150 | 502 | 245 | 747 | 170 | 142 | 31 |
| TVM1-170 | 538 | 245 | 783 | 170 | 142 | 33 |
| TVM1-190 | 574 | 245 | 819 | 170 | 142 | 34 |
| TVM1-210 | 610 | 245 | 855 | 170 | 142 | 35 |
| TVM1-230 | 646 | 245 | 891 | 170 | 142 | 36 |
| TVM1-250 | 692 | 290 | 982 | 190 | 155 | 42 |
| TVM1-270 | 728 | 290 | 1018 | 190 | 155 | 43 |
| TVM1-300 | 782 | 290 | 1072 | 190 | 155 | 45 |
| TVM1-330 | 836 | 290 | 1126 | 190 | 155 | 49 |
| TVM1-360 | 890 | 290 | 1180 | 190 | 155 | 51 |

Technical Data

Performance Curve ISO9906 Annex A 2900rpm



Installation Sketch



Performance Table

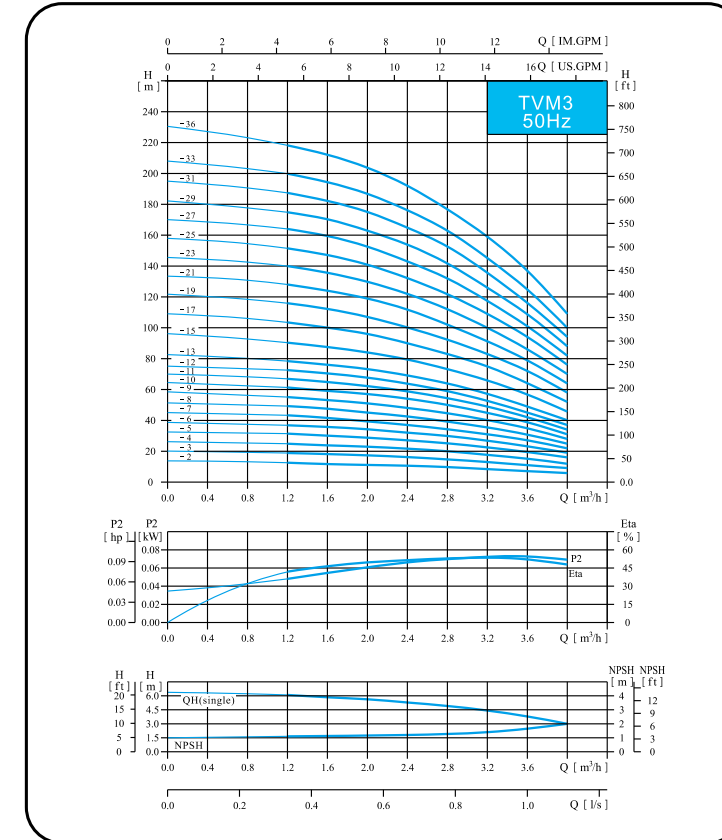
| Model | Driving Motor | | Q (m³/h) | H (m) | | | | | | | | | | |
|----------|---------------|------|----------|-------|-----|-----|-----|-----|-----|-----|-----|--|--|--|
| | (kW) | (hp) | | 1 | 1.2 | 1.6 | 2.0 | 2.4 | 2.8 | 3.2 | 3.5 | | | |
| TVM2-20 | 0.37 | 0.5 | | 18 | 17 | 16 | 15 | 13 | 12 | 10 | 8 | | | |
| TVM2-30 | 0.37 | 0.5 | | 27 | 26 | 24 | 22 | 20 | 18 | 15 | 12 | | | |
| TVM2-40 | 0.55 | 0.75 | | 36 | 35 | 33 | 30 | 26 | 24 | 20 | 16 | | | |
| TVM2-50 | 0.55 | 0.75 | | 45 | 43 | 40 | 37 | 33 | 30 | 24 | 20 | | | |
| TVM2-60 | 0.75 | 1 | | 53 | 52 | 50 | 45 | 40 | 36 | 30 | 24 | | | |
| TVM2-70 | 0.75 | 1 | | 63 | 61 | 57 | 52 | 47 | 41 | 35 | 28 | | | |
| TVM2-90 | 1.1 | 1.5 | | 80 | 78 | 73 | 67 | 61 | 54 | 45 | 37 | | | |
| TVM2-110 | 1.1 | 1.5 | | 98 | 95 | 89 | 82 | 73 | 64 | 54 | 44 | | | |
| TVM2-130 | 1.5 | 2 | | 116 | 114 | 106 | 98 | 89 | 78 | 65 | 52 | | | |
| TVM2-150 | 1.5 | 2 | | 134 | 130 | 123 | 112 | 100 | 90 | 73 | 60 | | | |
| TVM2-180 | 2.2 | 3 | | 161 | 157 | 148 | 136 | 121 | 108 | 91 | 76 | | | |
| TVM2-220 | 2.2 | 3 | | 197 | 192 | 180 | 165 | 148 | 130 | 110 | 90 | | | |
| TVM2-260 | 3.0 | 4 | | 232 | 228 | 214 | 198 | 179 | 158 | 130 | 110 | | | |

Size and Weight

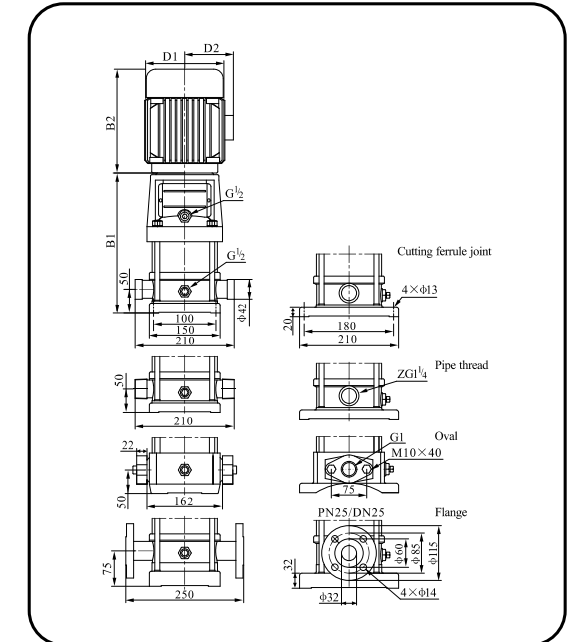
| Model | Size(mm) | | | | | Weight (kg) |
|----------|----------|-----|-------|-----|-----|-------------|
| | B1 | B2 | B1+B2 | D1 | D2 | |
| TVM2-20 | 258 | 210 | 468 | 148 | 117 | 20 |
| TVM2-30 | 276 | 210 | 486 | 148 | 117 | 20 |
| TVM2-40 | 294 | 210 | 504 | 148 | 117 | 22 |
| TVM2-50 | 312 | 210 | 522 | 148 | 117 | 23 |
| TVM2-60 | 340 | 245 | 585 | 170 | 142 | 26 |
| TVM2-70 | 358 | 245 | 603 | 170 | 142 | 26 |
| TVM2-90 | 394 | 245 | 639 | 170 | 142 | 28 |
| TVM2-110 | 430 | 245 | 675 | 170 | 142 | 29 |
| TVM2-130 | 476 | 290 | 766 | 190 | 155 | 35 |
| TVM2-150 | 512 | 290 | 802 | 190 | 155 | 36 |
| TVM2-180 | 566 | 290 | 856 | 190 | 155 | 41 |
| TVM2-220 | 638 | 290 | 928 | 190 | 155 | 42 |
| TVM2-260 | 720 | 315 | 1035 | 197 | 165 | 52 |

Technical Data

Performance Curve ISO9906 Annex A 2900rpm



Installation Sketch



Performance Table

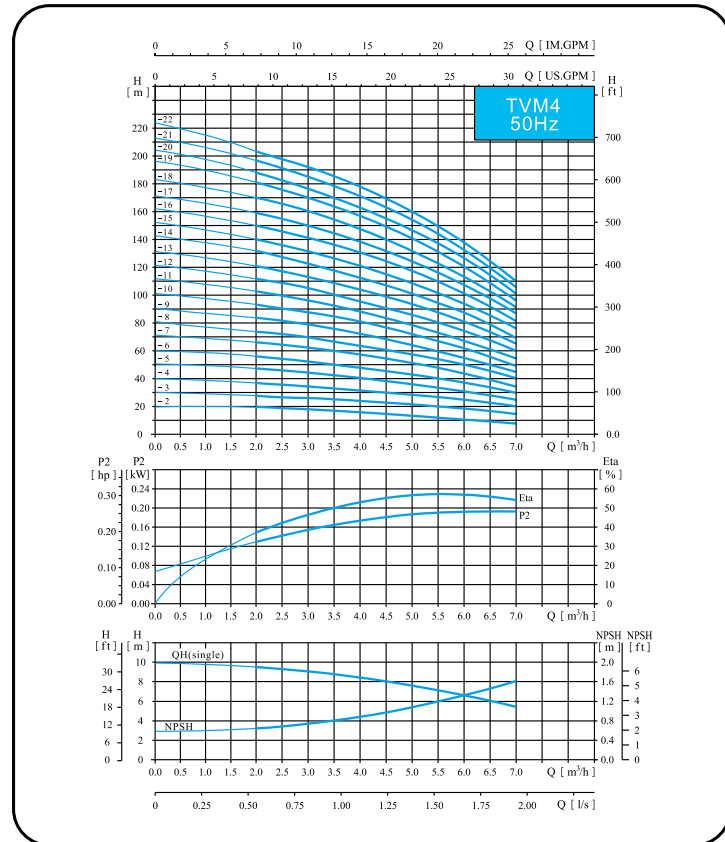
| Model | Driving Motor | | Q (m³/h) | H (m) | | | | | | | | | | | |
|----------|---------------|------|----------|-------|------|------|------|-----|-----|-----|-----|-----|--|--|--|
| | (kW) | (hp) | | 1.2 | 1.6 | 2.0 | 2.4 | 2.8 | 3.0 | 3.2 | 3.6 | 4.0 | | | |
| TVM3-20 | 0.37 | 0.5 | | 12.5 | 11.5 | 11 | 10.5 | 10 | 9 | 8 | 7 | 6 | | | |
| TVM3-30 | 0.37 | 0.5 | | 19 | 18.5 | 17.5 | 16.5 | 15 | 14 | 13 | 11 | 9 | | | |
| TVM3-40 | 0.37 | 0.5 | | 25 | 24 | 23 | 21.5 | 20 | 19 | 18 | 15 | 12 | | | |
| TVM3-50 | 0.37 | 0.5 | | 31 | 30 | 29 | 27 | 25 | 23 | 22 | 19 | 16 | | | |
| TVM3-60 | 0.55 | 0.75 | | 36 | 35 | 34 | 32 | 30 | 28 | 27 | 23 | 19 | | | |
| TVM3-70 | 0.55 | 0.75 | | 43 | 41 | 39 | 37 | 34 | 32 | 31 | 27 | 22 | | | |
| TVM3-80 | 0.75 | 1 | | 49 | 47 | 45 | 43 | 39 | 37 | 35 | 31 | 25 | | | |
| TVM3-90 | 0.75 | 1 | | 55 | 53 | 51 | 48 | 45 | 42 | 40 | 35 | 28 | | | |
| TVM3-100 | 0.75 | 1 | | 61 | 59 | 57 | 54 | 50 | 47 | 45 | 39 | 31 | | | |
| TVM3-110 | 1.1 | 1.5 | | 67 | 64 | 61 | 58 | 54 | 51 | 49 | 42 | 34 | | | |
| TVM3-120 | 1.1 | 1.5 | | 73 | 70 | 67 | 63 | 58 | 55 | 52 | 45 | 37 | | | |
| TVM3-130 | 1.1 | 1.5 | | 78 | 76 | 73 | 69 | 64 | 60 | 57 | 49 | 40 | | | |
| TVM3-150 | 1.1 | 1.5 | | 90 | 88 | 84 | 79 | 73 | 69 | 66 | 57 | 46 | | | |
| TVM3-170 | 1.5 | 2 | | 103 | 100 | 96 | 90 | 83 | 79 | 75 | 64 | 52 | | | |
| TVM3-190 | 1.5 | 2 | | 115 | 112 | 107 | 100 | 92 | 88 | 83 | 72 | 58 | | | |
| TVM3-210 | 2.2 | 3 | | 128 | 124 | 119 | 112 | 102 | 98 | 91 | 79 | 64 | | | |
| TVM3-230 | 2.2 | 3 | | 140 | 135 | 130 | 122 | 112 | 107 | 100 | 86 | 70 | | | |
| TVM3-250 | 2.2 | 3 | | 151 | 147 | 141 | 131 | 122 | 116 | 109 | 94 | 76 | | | |
| TVM3-270 | 2.2 | 3 | | 164 | 159 | 152 | 143 | 132 | 124 | 117 | 101 | 82 | | | |
| TVM3-290 | 2.2 | 3 | | 175 | 170 | 163 | 153 | 142 | 133 | 126 | 109 | 88 | | | |
| TVM3-310 | 3.0 | 4 | | 187 | 182 | 175 | 165 | 153 | 142 | 135 | 116 | 94 | | | |
| TVM3-330 | 3.0 | 4 | | 199 | 194 | 187 | 176 | 163 | 151 | 145 | 125 | 100 | | | |
| TVM1-360 | 3.0 | 4 | | 218 | 212 | 204 | 192 | 178 | 168 | 159 | 137 | 109 | | | |

Size and Weight

| Model | Size(mm) | | | | | Weight (kg) |
|----------|----------|-----|-------|-----|-----|-------------|
| | B1 | B2 | B1+B2 | D1 | D2 | |
| TVM3-20 | 258 | 210 | 468 | 148 | 117 | 20 |
| TVM3-30 | 276 | 210 | 486 | 148 | 117 | 20 |
| TVM3-40 | 294 | 210 | 504 | 148 | 117 | 21 |
| TVM3-50 | 312 | 210 | 522 | 148 | 117 | 21 |
| TVM3-60 | 330 | 210 | 540 | 148 | 117 | 23 |
| TVM3-70 | 348 | 210 | 558 | 148 | 117 | 24 |
| TVM3-80 | 376 | 245 | 621 | 170 | 142 | 27 |
| TVM3-90 | 394 | 245 | 639 | 170 | 142 | 28 |
| TVM3-100 | 412 | 245 | 657 | 170 | 142 | 28 |
| TVM3-110 | 430 | 245 | 675 | 170 | 142 | 29 |
| TVM3-120 | 448 | 245 | 693 | 170 | 142 | 30 |
| TVM3-130 | 466 | 245 | 711 | 170 | 142 | 31 |
| TVM3-150 | 502 | 245 | 747 | 170 | 142 | 32 |
| TVM3-170 | 548 | 290 | 838 | 190 | 155 | 38 |
| TVM3-190 | 584 | 290 | 874 | 190 | 155 | 39 |
| TVM3-210 | 620 | 290 | 910 | 190 | 155 | 42 |
| TVM3-230 | 656 | 290 | 946 | 190 | 155 | 43 |
| TVM3-250 | 692 | 290 | 982 | 190 | 155 | 44 |
| TVM3-270 | 728 | 290 | 1018 | 190 | 155 | 45 |
| TVM3-290 | 764 | 290 | 1054 | 190 | 155 | 46 |
| TVM3-310 | 810 | 315 | 1125 | 197 | 165 | 54 |
| TVM3-330 | 846 | 315 | 1161 | 197 | 165 | 55 |
| TVM1-360 | 900 | 315 | 1215 | 197 | 165 | 57 |

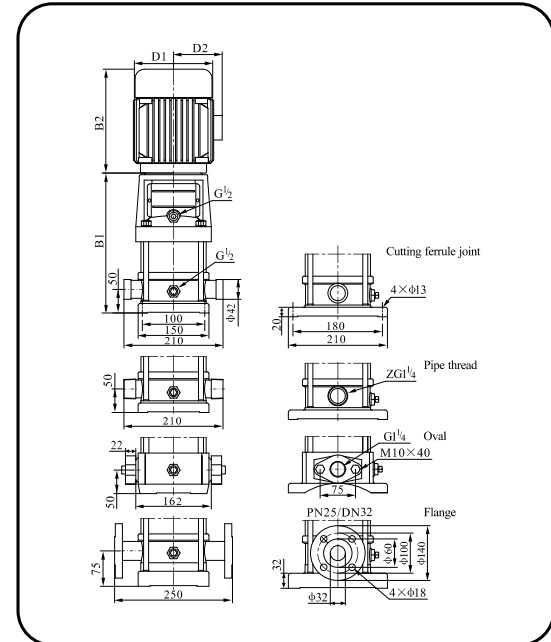
Technical Data

Performance Curve ISO9906 Annex A 2900rpm



TVM 4

Installation Sketch



Performance Table

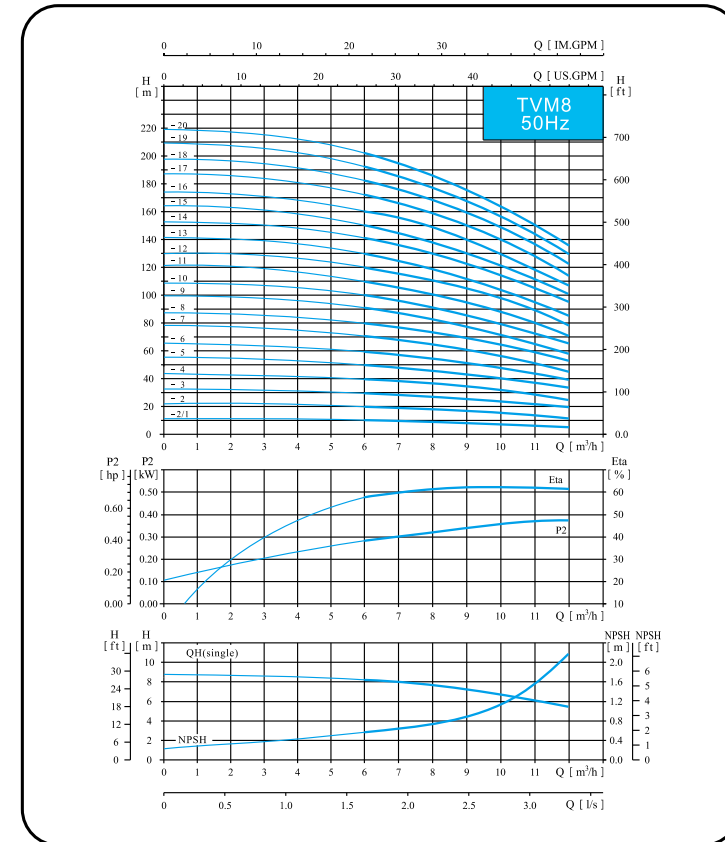
| Model | Driving Motor | | Q (m³/h) | H (m) | | | | | | | |
|----------|---------------|------|----------|-------|-----|-----|-----|-----|-----|-----|--|
| | (kW) | (hp) | | 1.5 | 2.0 | 3.0 | 4.0 | 5.0 | 6.0 | 7.0 | |
| TVM4-20 | 0.37 | 0.5 | H (m) | 19 | 18 | 17 | 15 | 13 | 10 | 8 | |
| TVM4-30 | 0.55 | 0.75 | | 28 | 27 | 26 | 24 | 20 | 18 | 13 | |
| TVM4-40 | 0.75 | 1 | | 38 | 36 | 34 | 32 | 27 | 24 | 19 | |
| TVM4-50 | 1.1 | 1.5 | | 47 | 45 | 43 | 40 | 34 | 31 | 23 | |
| TVM4-60 | 1.1 | 1.5 | | 56 | 54 | 52 | 48 | 41 | 37 | 28 | |
| TVM4-70 | 1.5 | 2 | | 66 | 63 | 61 | 56 | 48 | 43 | 33 | |
| TVM4-80 | 1.5 | 2 | | 74 | 72 | 70 | 64 | 55 | 50 | 38 | |
| TVM4-100 | 2.2 | 3 | | 96 | 90 | 87 | 81 | 71 | 62 | 48 | |
| TVM4-120 | 2.2 | 3 | | 114 | 108 | 104 | 95 | 85 | 75 | 58 | |
| TVM4-140 | 3.0 | 4 | | 136 | 126 | 122 | 112 | 101 | 89 | 68 | |
| TVM4-160 | 3.0 | 4 | | 152 | 144 | 140 | 129 | 115 | 101 | 78 | |
| TVM4-190 | 4.0 | 5.5 | | 183 | 171 | 168 | 153 | 137 | 122 | 93 | |
| TVM4-220 | 4.0 | 5.5 | | 211 | 200 | 192 | 178 | 160 | 138 | 108 | |

Size and Weight

| Model | Size(mm) | | | | | Weight (kg) |
|----------|----------|-----|-------|-----|-----|-------------|
| | B1 | B2 | B1+B2 | D1 | D2 | |
| TVM4-20 | 276 | 210 | 486 | 148 | 117 | 21 |
| TVM4-30 | 303 | 210 | 513 | 148 | 117 | 22 |
| TVM4-40 | 340 | 245 | 585 | 170 | 142 | 25 |
| TVM4-50 | 367 | 245 | 612 | 170 | 142 | 27 |
| TVM4-60 | 394 | 245 | 639 | 170 | 142 | 27 |
| TVM4-70 | 431 | 290 | 721 | 190 | 155 | 33 |
| TVM4-80 | 458 | 290 | 748 | 190 | 155 | 33 |
| TVM4-100 | 512 | 290 | 802 | 190 | 155 | 37 |
| TVM4-120 | 566 | 290 | 856 | 190 | 155 | 38 |
| TVM4-140 | 630 | 315 | 945 | 197 | 165 | 46 |
| TVM4-160 | 684 | 315 | 999 | 197 | 165 | 48 |
| TVM4-190 | 765 | 335 | 1100 | 230 | 188 | 57 |
| TVM4-220 | 846 | 335 | 1181 | 230 | 188 | 59 |

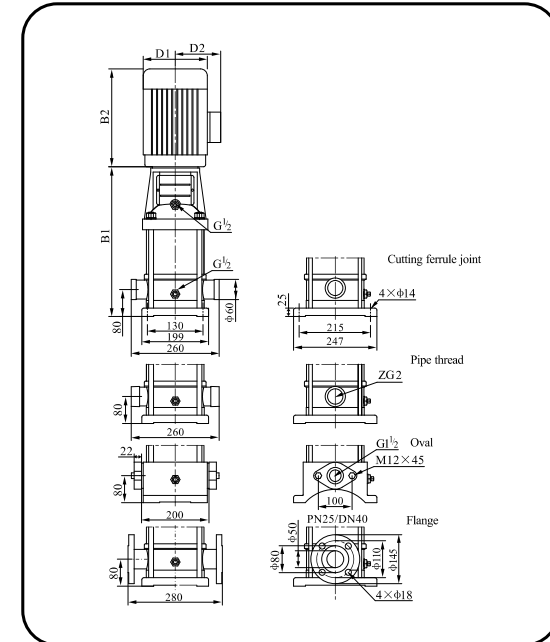
Technical Data

Performance Curve ISO9906 Annex A 2900rpm



TVM 8

Installation Sketch



Performance Table

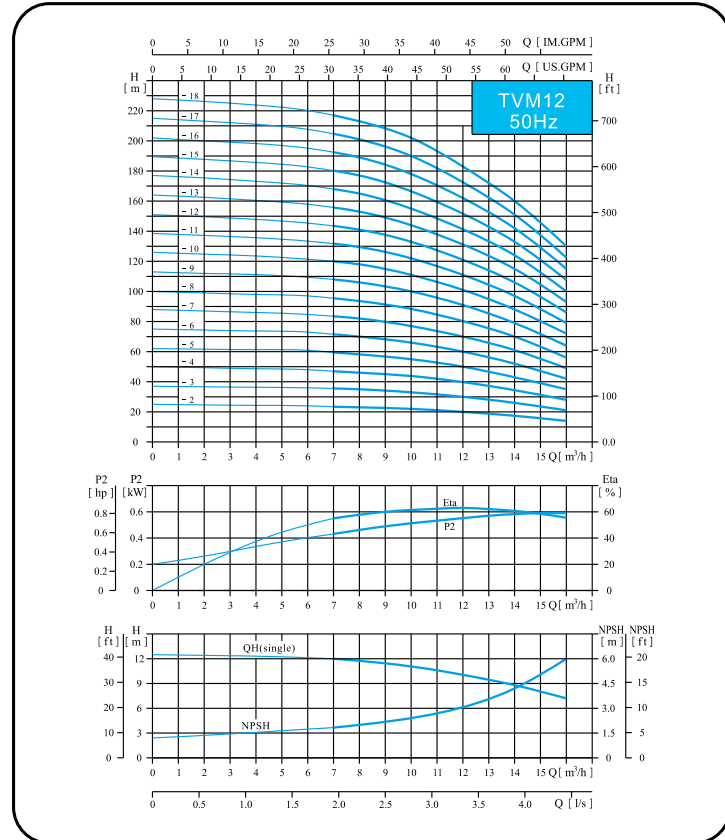
| Model | Driving Motor | | Q (m³/h) | H (m) | | | | | | | | | | | |
|-----------|---------------|------|----------|-------|------|------|-----|-----|-----|-----|-----|--|--|--|--|
| | (kW) | (hp) | | 5 | 6 | 7 | 8 | 9 | 10 | 11 | 12 | | | | |
| TVM8-20/1 | 0.75 | 1 | H (m) | 10 | 9.5 | 9.3 | 9 | 8.5 | 8 | 7 | 6 | | | | |
| TVM8-20 | 0.75 | 1 | | 20 | 19.5 | 19 | 18 | 17 | 16 | 14 | 13 | | | | |
| TVM8-30 | 1.1 | 1.5 | | 30 | 29.5 | 28.5 | 27 | 25 | 24 | 21 | 19 | | | | |
| TVM8-40 | 1.5 | 2 | | 41 | 39.5 | 38 | 36 | 34 | 32 | 28 | 26 | | | | |
| TVM8-50 | 2.2 | 3 | | 52 | 50 | 48 | 45 | 42 | 40 | 36 | 32 | | | | |
| TVM8-60 | 2.2 | 3 | | 62 | 60 | 57 | 54 | 51 | 48 | 43 | 39 | | | | |
| TVM8-80 | 3.0 | 4 | | 83 | 80 | 77 | 73 | 69 | 65 | 58 | 52 | | | | |
| TVM8-100 | 4.0 | 5.5 | | 104 | 100 | 97 | 92 | 87 | 81 | 73 | 65 | | | | |
| TVM8-120 | 4.0 | 5.5 | | 124 | 120 | 116 | 111 | 104 | 92 | 87 | 78 | | | | |
| TVM8-140 | 5.5 | 7.5 | | 145 | 141 | 136 | 130 | 122 | 113 | 102 | 92 | | | | |
| TVM8-160 | 5.5 | 7.5 | | 166 | 161 | 156 | 148 | 139 | 130 | 118 | 106 | | | | |
| TVM8-180 | 7.5 | 10 | | 187 | 182 | 175 | 167 | 157 | 146 | 134 | 120 | | | | |
| TVM8-200 | 7.5 | 10 | | 208 | 202 | 195 | 186 | 175 | 163 | 150 | 135 | | | | |

Size and Weight

| Model | Size(mm) | | | | | Weight (kg) |
|-----------|----------|-----|-------|-----|-----|-------------|
| | B1 | B2 | B1+B2 | D1 | D2 | |
| TVM8-20/1 | 347 | 245 | 592 | 170 | 142 | 32 |
| TVM8-20 | 347 | 245 | 592 | 170 | 142 | 32 |
| TVM8-30 | 377 | 245 | 622 | 170 | 142 | 34 |
| TVM8-40 | 417 | 290 | 707 | 190 | 155 | 40 |
| TVM8-50 | 447 | 290 | 737 | 190 | 155 | 44 |
| TVM8-60 | 477 | 290 | 767 | 190 | 155 | 45 |
| TVM8-80 | 547 | 315 | 862 | 197 | 165 | 53 |
| TVM8-100 | 607 | 335 | 942 | 230 | 188 | 64 |
| TVM8-120 | 667 | 335 | 1002 | 230 | 188 | 66 |
| TVM8-140 | 747 | 430 | 1177 | 260 | 208 | 81 |
| TVM8-160 | 807 | 430 | 1237 | 260 | 208 | 84 |
| TVM8-180 | 867 | 430 | 1297 | 260 | 208 | 93 |
| TVM8-200 | 927 | 430 | 1357 | 260 | 208 | 94 |

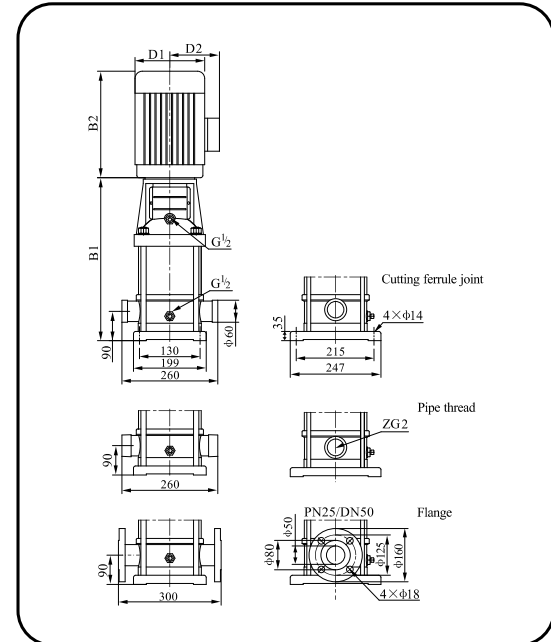
Technical Data

Performance Curve ISO9906 Annex A 2900rpm



TVM 12

Installation Sketch



Performance Table

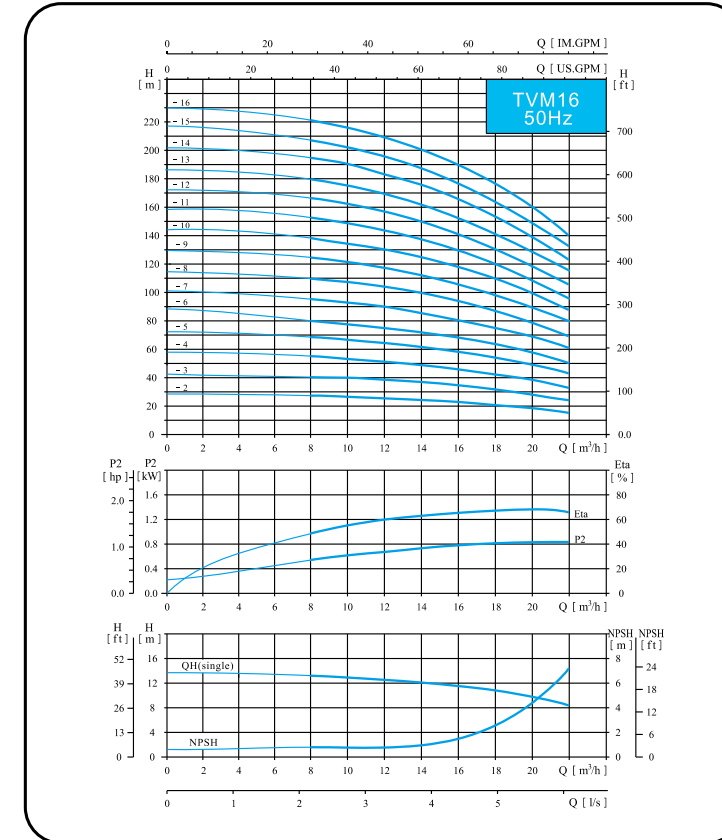
| Model | Driving Motor | | Q (m³/h) | H (m) | | | | | | | | | | | | | | | |
|-----------|---------------|------|----------|-------|-------|-----|-------|-----|-------|-----|-------|-----|----|--|--|--|--|--|--|
| | (kW) | (hp) | | 7 | 8 | 9 | 10 | 11 | 12 | 13 | 14 | 15 | 16 | | | | | | |
| TVM12-20 | 1.5 | 2 | 23.5 | 23 | 22.5 | 22 | 21 | 20 | 18.5 | 17 | 15.5 | 14 | | | | | | | |
| TVM12-30 | 2.2 | 3 | 35.5 | 35 | 34 | 33 | 31.5 | 30 | 28 | 26 | 23.5 | 21 | | | | | | | |
| TVM12-40 | 3 | 4 | 47 | 46 | 45 | 44 | 42 | 40 | 37 | 34 | 31 | 28 | | | | | | | |
| TVM12-50 | 3 | 4 | 59.5 | 58 | 56.5 | 55 | 52.5 | 50 | 46.5 | 43 | 39 | 35 | | | | | | | |
| TVM12-60 | 4 | 5.5 | 71.5 | 70 | 68 | 66 | 63 | 60 | 56 | 52 | 47 | 42 | | | | | | | |
| TVM12-70 | 5.5 | 7.5 | 83.5 | 82 | 79.5 | 77 | 73.5 | 70 | 65.5 | 61 | 55 | 49 | | | | | | | |
| TVM12-80 | 5.5 | 7.5 | 95.5 | 94 | 91 | 88 | 84 | 80 | 75 | 70 | 63 | 56 | | | | | | | |
| TVM12-90 | 5.5 | 7.5 | 108 | 106 | 103 | 100 | 95.5 | 91 | 85 | 79 | 71.5 | 64 | | | | | | | |
| TVM12-100 | 7.5 | 10 | 120 | 118 | 114.5 | 111 | 106 | 101 | 94.5 | 88 | 80 | 72 | | | | | | | |
| TVM12-120 | 7.5 | 10 | 143.5 | 141 | 137 | 133 | 127 | 121 | 113.5 | 106 | 96 | 86 | | | | | | | |
| TVM12-140 | 11 | 15 | 168 | 165 | 160 | 155 | 148 | 141 | 132.5 | 124 | 112 | 100 | | | | | | | |
| TVM12-160 | 11 | 15 | 192.5 | 189 | 183.5 | 178 | 170 | 162 | 152 | 142 | 128.5 | 115 | | | | | | | |
| TVM12-180 | 11 | 15 | 217 | 213 | 207.5 | 202 | 192.5 | 183 | 171.5 | 160 | 145 | 130 | | | | | | | |

Size and Weight

| Model | Size(mm) | | | | | Weight (kg) |
|-----------|----------|-----|-------|-----|-----|-------------|
| | B1 | B2 | B1+B2 | D1 | D2 | |
| TVM12-20 | 367 | 290 | 657 | 190 | 155 | 39 |
| TVM12-30 | 397 | 290 | 687 | 190 | 155 | 43 |
| TVM12-40 | 437 | 315 | 752 | 197 | 165 | 51 |
| TVM12-50 | 467 | 315 | 782 | 197 | 165 | 53 |
| TVM12-60 | 497 | 335 | 832 | 230 | 188 | 61 |
| TVM12-70 | 547 | 430 | 977 | 260 | 208 | 73 |
| TVM12-80 | 577 | 430 | 1007 | 260 | 208 | 74 |
| TVM12-90 | 607 | 430 | 1037 | 260 | 208 | 76 |
| TVM12-100 | 637 | 430 | 1067 | 260 | 208 | 83 |
| TVM12-120 | 697 | 430 | 1127 | 260 | 208 | 87 |
| TVM12-140 | 845 | 490 | 1335 | 330 | 255 | 157 |
| TVM12-160 | 905 | 490 | 1395 | 330 | 255 | 161 |
| TVM12-180 | 965 | 490 | 1455 | 330 | 255 | 164 |

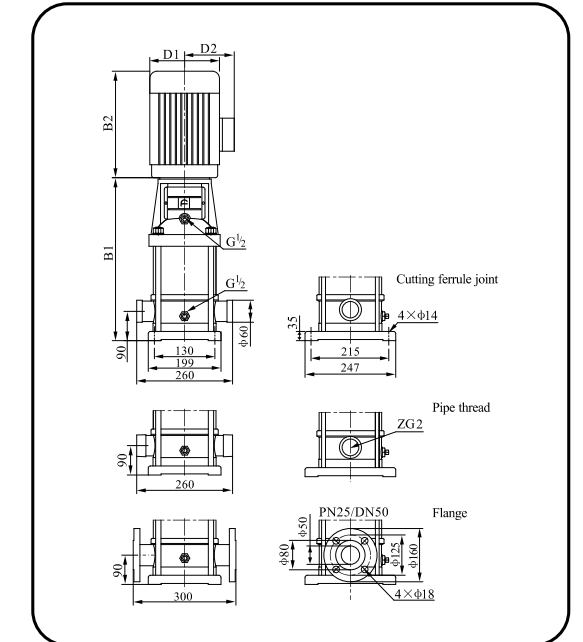
Technical Data

Performance Curve ISO9906 Annex A 2900rpm



TVM 16

Installation Sketch



Performance Table

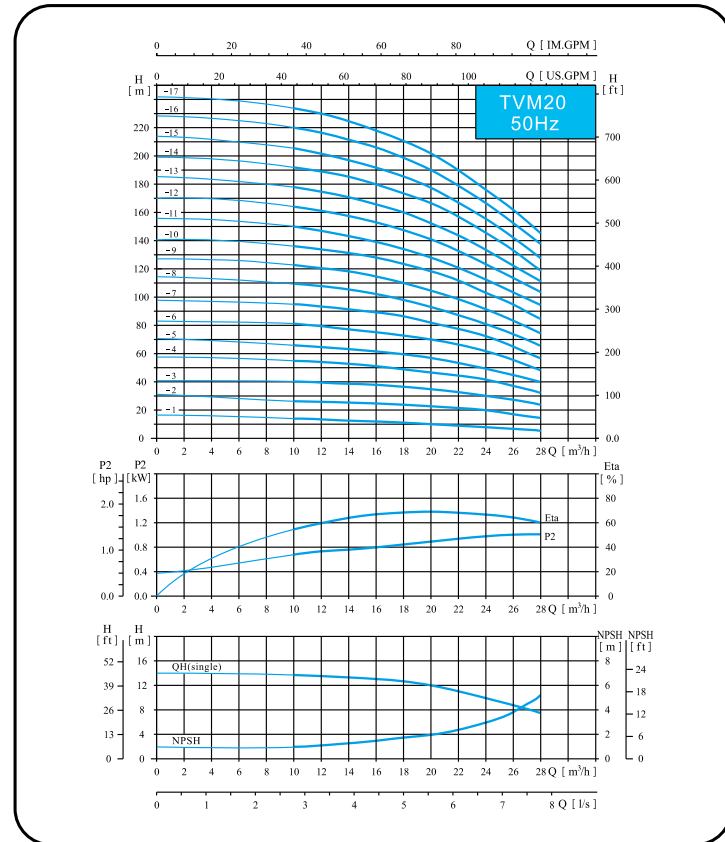
| Model | Driving Motor | | Q (m³/h) | H (m) | | | | | | | | | | | | | | | |
|-----------|---------------|------|----------|-------|-----|-----|-----|-----|-----|-----|----|--|--|--|--|--|--|--|--|
| | (kW) | (hp) | | 8 | 10 | 12 | 14 | 16 | 18 | 20 | 22 | | | | | | | | |
| TVM16-20 | 2.2 | 3 | 27 | 26 | 25 | 24 | 22 | 21 | 19 | 16 | | | | | | | | | |
| TVM16-30 | 3.0 | 4 | 41 | 40 | 38 | 37 | 34 | 32 | 29 | 25 | | | | | | | | | |
| TVM16-40 | 4.0 | 5.5 | 54 | 53 | 52 | 49 | 46 | 43 | 38 | 34 | | | | | | | | | |
| TVM16-50 | 5.5 | 7.5 | 68 | 67 | 65 | 62 | 58 | 54 | 48 | 43 | | | | | | | | | |
| TVM16-60 | 5.5 | 7.5 | 82 | 80 | 78 | 74 | 70 | 64 | 58 | 52 | | | | | | | | | |
| TVM16-70 | 7.5 | 10 | 96 | 95 | 91 | 87 | 82 | 76 | 68 | 61 | | | | | | | | | |
| TVM16-80 | 7.5 | 10 | 110 | 108 | 104 | 99 | 94 | 86 | 77 | 70 | | | | | | | | | |
| TVM16-100 | 11 | 15 | 138 | 136 | 131 | 125 | 118 | 109 | 97 | 87 | | | | | | | | | |
| TVM16-120 | 11 | 15 | 166 | 162 | 157 | 150 | 141 | 130 | 116 | 105 | | | | | | | | | |
| TVM16-140 | 15 | 20 | 194 | 190 | 184 | 175 | 166 | 152 | 136 | 122 | | | | | | | | | |
| TVM16-160 | 15 | 20 | 222 | 217 | 210 | 200 | 189 | 174 | 156 | 140 | | | | | | | | | |

Size and Weight

| Model | Size(mm) | | | | | Weight (kg) |
|-----------|----------|-----|-------|-----|-----|-------------|
| | B1 | B2 | B1+B2 | D1 | D2 | |
| TVM16-20 | 397 | 290 | 687 | 190 | 155 | 42 |
| TVM16-30 | 452 | 315 | 767 | 197 | 165 | 50 |
| TVM16-40 | 497 | 335 | 832 | 230 | 188 | 59 |
| TVM16-50 | 562 | 430 | 992 | 260 | 208 | 76 |
| TVM16-60 | 607 | 430 | 1037 | 260 | 208 | 77 |
| TVM16-70 | 652 | 430 | 1082 | 260 | 208 | 84 |
| TVM16-80 | 697 | 430 | 1127 | 260 | 208 | 86 |
| TVM16-100 | 875 | 490 | 1365 | 330 | 255 | 158 |
| TVM16-120 | 965 | 490 | 1455 | 330 | 255 | 161 |
| TVM16-140 | 1055 | 490 | 1545 | 330 | 255 | 174 |
| TVM16-160 | 1145 | 490 | 1635 | 330 | 255 | 178 |

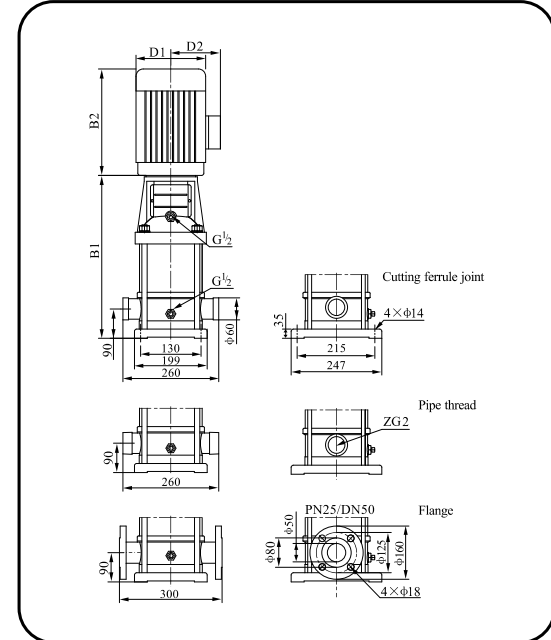
Technical Data

Performance Curve ISO9906 Annex A 2900rpm



TVM 20

Installation Sketch



Performance Table

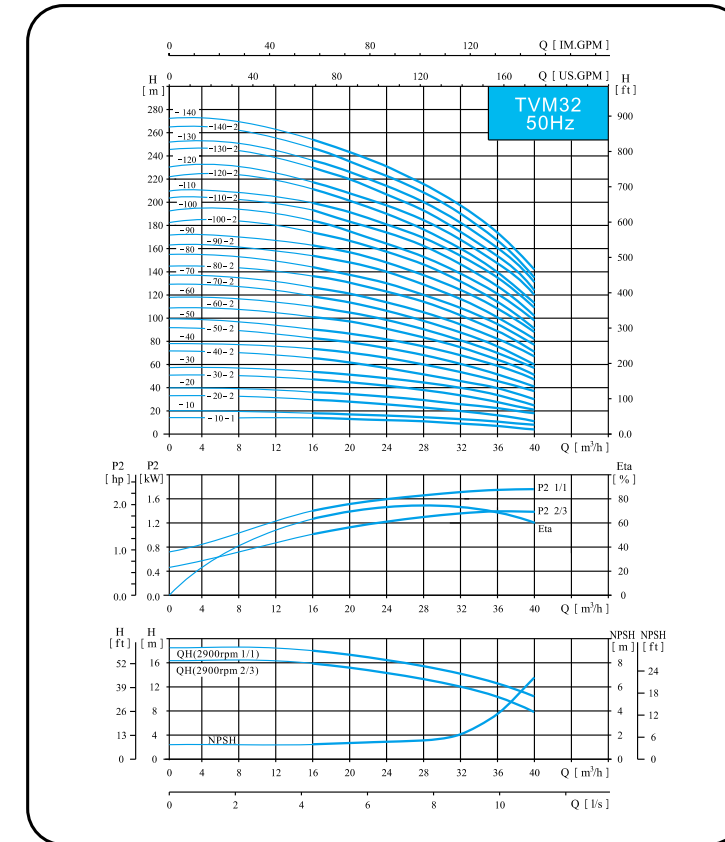
| Model | Driving Motor | | Q (m³/h) | H (m) | | | | | | | | | | | | | |
|-----------|---------------|------|----------|-------|------|------|-----|-----|-----|-----|-----|-----|-----|--|--|--|--|
| | (kW) | (hp) | | 10 | 12 | 14 | 16 | 18 | 20 | 22 | 24 | 26 | 28 | | | | |
| TVM20-10 | 1.1 | 1.5 | | 13.5 | 13 | 12.5 | 12 | 11 | 10 | 9 | 8 | 7 | 6 | | | | |
| TVM20-20 | 2.2 | 3 | | 27 | 26.5 | 26 | 25 | 24 | 23 | 22 | 20 | 18 | 15 | | | | |
| TVM20-30 | 4.0 | 5.5 | | 40 | 39.5 | 39 | 38 | 37 | 35 | 33 | 30 | 27 | 24 | | | | |
| TVM20-40 | 5.5 | 7.5 | | 54 | 53 | 52 | 51 | 49 | 47 | 44 | 41 | 37 | 33 | | | | |
| TVM20-50 | 5.5 | 7.5 | | 67 | 66 | 64 | 62 | 60 | 58 | 55 | 50 | 45 | 40 | | | | |
| TVM20-60 | 7.5 | 10 | | 81 | 79 | 77 | 75 | 73 | 70 | 66 | 61 | 55 | 49 | | | | |
| TVM20-70 | 7.5 | 10 | | 95 | 93 | 91 | 89 | 86 | 82 | 77 | 71 | 65 | 58 | | | | |
| TVM20-80 | 11 | 15 | | 109 | 107 | 105 | 102 | 99 | 94 | 89 | 82 | 75 | 67 | | | | |
| TVM20-100 | 11 | 15 | | 136 | 134 | 131 | 128 | 124 | 118 | 111 | 103 | 95 | 85 | | | | |
| TVM20-120 | 15 | 20 | | 164 | 162 | 158 | 154 | 149 | 142 | 133 | 124 | 114 | 102 | | | | |
| TVM20-140 | 15 | 20 | | 192 | 189 | 185 | 180 | 174 | 166 | 156 | 145 | 133 | 119 | | | | |
| TVM20-170 | 18.5 | 25 | | 234 | 230 | 225 | 219 | 212 | 202 | 190 | 177 | 162 | 145 | | | | |

Size and Weight

| Model | Size(mm) | | | | | Weight (kg) |
|-----------|----------|-----|-------|-----|-----|-------------|
| | B1 | B2 | B1+B2 | D1 | D2 | |
| TVM20-10 | 387 | 245 | 632 | 170 | 142 | 33 |
| TVM20-20 | 397 | 290 | 687 | 190 | 155 | 42 |
| TVM20-30 | 452 | 335 | 787 | 230 | 188 | 58 |
| TVM20-40 | 517 | 430 | 947 | 260 | 208 | 74 |
| TVM20-50 | 562 | 430 | 992 | 260 | 208 | 76 |
| TVM20-60 | 607 | 430 | 1037 | 260 | 208 | 82 |
| TVM20-70 | 652 | 430 | 1082 | 260 | 208 | 84 |
| TVM20-80 | 785 | 490 | 1275 | 330 | 255 | 153 |
| TVM20-100 | 875 | 490 | 1365 | 330 | 255 | 157 |
| TVM20-120 | 965 | 490 | 1455 | 330 | 255 | 170 |
| TVM20-140 | 1055 | 490 | 1545 | 330 | 255 | 172 |
| TVM20-170 | 1190 | 550 | 1740 | 330 | 255 | 195 |

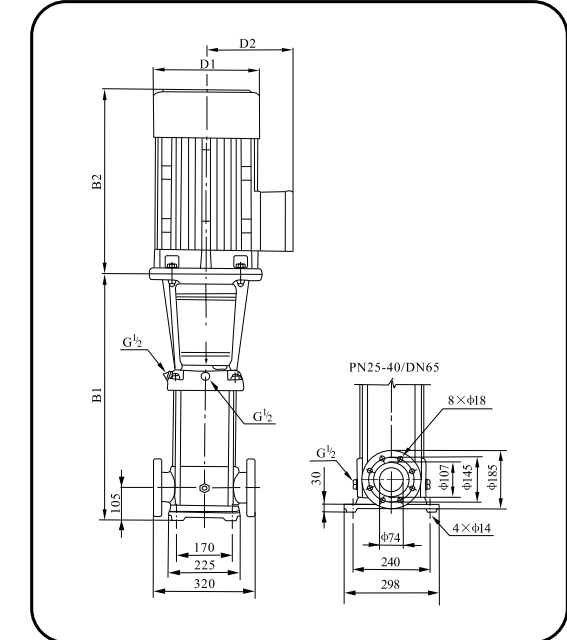
Technical Data

Performance Curve ISO9906 Annex A 2900rpm



TVM 32

Installation Sketch



Performance Table

| Model | Driving Motor | | Q (m³/h) | H (m) | | | | | | | | | | | | | |
|-------------|---------------|------|----------|-------|-----|-----|-----|-----|-----|-----|--|--|--|--|--|--|--|
| | (kW) | (hp) | | 16 | 20 | 24 | 28 | 32 | 36 | 40 | | | | | | | |
| TVM32-10-1 | 1.5 | 2 | | 14 | 13 | 12 | 11 | 9 | 7 | 4 | | | | | | | |
| TVM32-10 | 2.2 | 3 | | 18 | 17 | 15 | 14 | 13 | 11 | 8 | | | | | | | |
| TVM32-20-2 | 3.0 | 4 | | 29 | 28 | 26 | 23 | 20 | 16 | 11 | | | | | | | |
| TVM32-20 | 4.0 | 5.5 | | 36 | 34 | 32 | 29 | 27 | 23 | 18 | | | | | | | |
| TVM32-30-2 | 5.5 | 7.5 | | 47 | 44 | 41 | 38 | 33 | 28 | 21 | | | | | | | |
| TVM32-30 | 5.5 | 7.5 | | 54 | 51 | 48 | 44 | 40 | 35 | 27 | | | | | | | |
| TVM32-40-2 | 7.5 | 10 | | 65 | 62 | 58 | 53 | 46 | 40 | 30 | | | | | | | |
| TVM32-40 | 7.5 | 10 | | 72 | 69 | 65 | 59 | 53 | 47 | 37 | | | | | | | |
| TVM32-50-2 | 11 | 15 | | 83 | 79 | 74 | 68 | 60 | 52 | 41 | | | | | | | |
| TVM32-50 | 11 | 15 | | 90 | 86 | 81 | 74 | 67 | 59 | 47 | | | | | | | |
| TVM32-60-2 | 11 | 15 | | 101 | 97 | 90 | 83 | 74 | 65 | 51 | | | | | | | |
| TVM32-60 | 11 | 15 | | 108 | 104 | 97 | 90 | 81 | 72 | 57 | | | | | | | |
| TVM32-70-2 | 15 | 20 | | 119 | 114 | 107 | 98 | 88 | 78 | 60 | | | | | | | |
| TVM32-70 | 15 | 20 | | 126 | 121 | 113 | 105 | 95 | 85 | 67 | | | | | | | |
| TVM32-80-2 | 15 | 20 | | 136 | 131 | 123 | 114 | 102 | 90 | 71 | | | | | | | |
| TVM32-80 | 15 | 20 | | 144 | 138 | 130 | 120 | 109 | 97 | 77 | | | | | | | |
| TVM32-90-2 | 18.5 | 25 | | 154 | 148 | 140 | 129 | 117 | 102 | 82 | | | | | | | |
| TVM32-90 | 18.5 | 25 | | 162 | 156 | 147 | 136 | 124 | 109 | 88 | | | | | | | |
| TVM32-100-2 | 18.5 | 25 | | 175 | 166 | 157 | 146 | 131 | 115 | 91 | | | | | | | |
| TVM32-100 | 18.5 | 25 | | 182 | 173 | 164 | 152 | 138 | 122 | 98 | | | | | | | |
| TVM32-110-2 | 22 | 30 | | 193 | 184 | 173 | 164 | 146 | 128 | 102 | | | | | | | |
| TVM32-110 | 22 | 30 | | 200 | 191 | 180 | 168 | 153 | 135 | 109 | | | | | | | |
| TVM32-120-2 | 22 | 30 | | 211 | 201 | 189 | 178 | 160 | 140 | 113 | | | | | | | |

Size and Weight

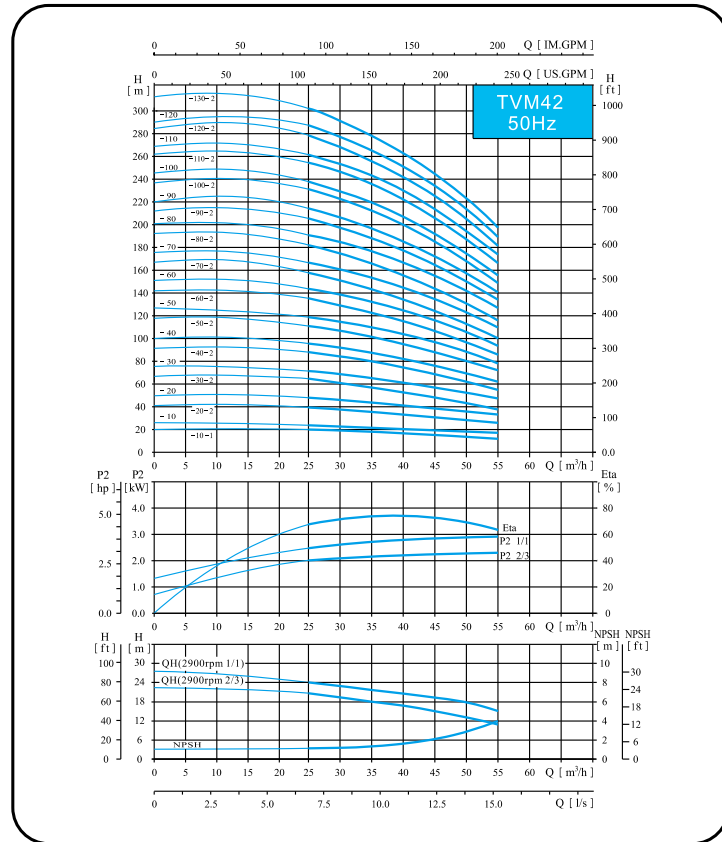
| Model | Size(mm) | | | | | Weight (kg) |
|-----------------------|----------|---------|---------|---------|---------|-------------|
| | B1 | B2 | B1+B2 | D1 | D2 | |
| TVM32-10-1/TVM32-10 | 505 | 290 | 795 | 190 | 155 | 64/68 |
| TVM32-20-2/TVM32-20 | 575 | 315/335 | 890/910 | 197/230 | 165/180 | 77/85 |
| TVM32-30-2/TVM32-30 | 645 | 430 | 1075 | 260 | 208 | 100 |
| TVM32-40-2/TVM32-40 | 715 | 430 | 1145 | 260 | 208 | 109 |
| TVM32-50-2/TVM32-50 | 890 | 490 | 1380 | 330 | 255 | 181 |
| TVM32-60-2/TVM32-60 | 960 | 490 | 1450 | 330 | 255 | 185 |
| TVM32-70-2/TVM32-70 | 1030 | 490 | 1520 | 330 | 255 | 199 |
| TVM32-80-2/TVM32-80 | 1100 | 490 | 1590 | 330 | 255 | 203 |
| TVM32-90-2/TVM32-90 | 1170 | 550 | 1720 | 330 | 255 | 222 |
| TVM32-100-2/TVM32-100 | 1240 | 550 | 1790 | 330 | 255 | 227 |
| TVM32-110-2/TVM32-110 | 1310 | 590 | 1900 | 360 | 285 | 272 |
| TVM32-120-2/TVM32-120 | 1380 | 590 | 1970 | 360 | 285 | 276 |
| TVM32-130-2/TVM32-130 | 1450 | 660 | 2110 | 400 | 310 | 337 |
| TVM32-140-2/TVM32-140 | 1520 | 660 | 2180 | 400 | 310 | 341 |

Performance Table

| Model | Driving Motor | | Q (m³/h) | H (m) | | | | | | | | | | | | | |
|-------------|---------------|------|----------|-------|-----|-----|-----|-----|-----|-----|--|--|--|--|--|--|--|
| | (kW) | (hp) | | 16 | 20 | 24 | 28 | 32 | 36 | 40 | | | | | | | |
| TVM32-120 | 22 | 30 | | 218 | 208 | 196 | 184 | 167 | 147 | 120 | | | | | | | |
| TVM32-130-2 | 30 | 40 | | 230 | 218 | 206 | 193 | 174 | 153 | 124 | | | | | | | |
| TVM32-130 | 30 | 40 | | 237 | 225 | 213 | 200 | 181 | 160 | 131 | | | | | | | |
| TVM32-140-2 | 30 | 40 | | 247 | 235 | 222 | 210 | 189 | 165 | 135 | | | | | | | |
| TVM32-140 | 30 | 40 | | 255 | 242 | 229 | 216 | 196 | 172 | 142 | | | | | | | |

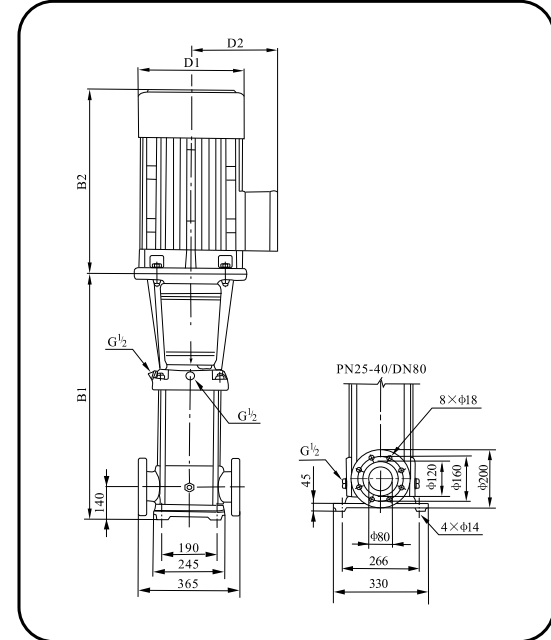
Technical Data

Performance Curve ISO9906 Annex A 2900rpm



TVM 42

Installation Sketch



Performance Table

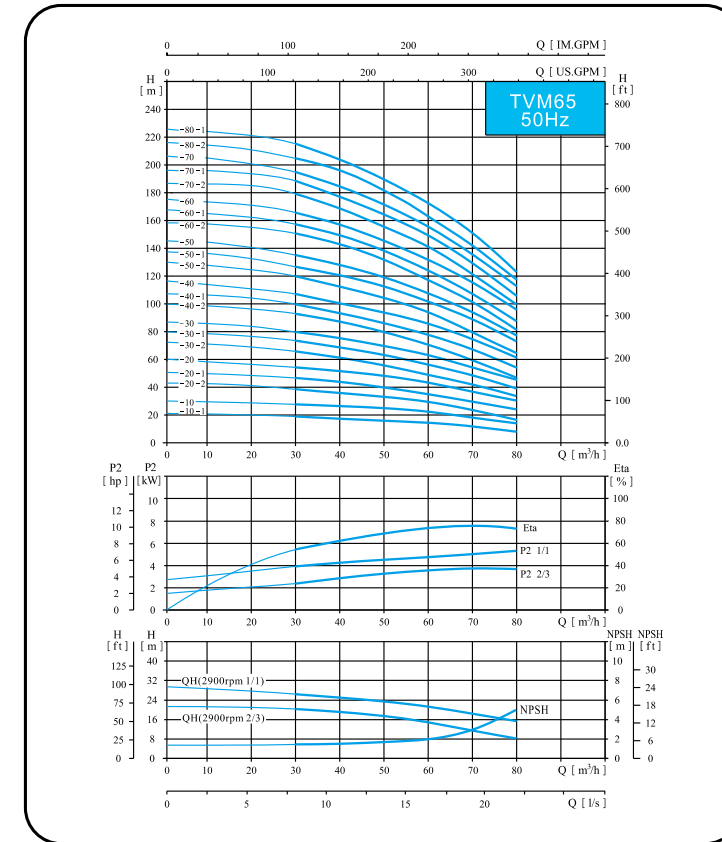
| Model | Driving Motor | | Q (m³/h) | H (m) | | | | | | | | | | | | | | | | | | | |
|-------------|---------------|------|----------|-------|-----|-----|-----|-----|-----|-----|-----|--|--|--|--|--|--|--|--|--|--|--|--|
| | (kW) | (hp) | | 25 | 30 | 35 | 40 | 42 | 45 | 50 | 55 | | | | | | | | | | | | |
| TVM42-10-1 | 3.0 | 4 | | 20 | 19 | 18 | 17 | 16 | 15 | 13 | 11 | | | | | | | | | | | | |
| TVM42-10 | 4.0 | 5.5 | | 24 | 23 | 22 | 21 | 20 | 19 | 18 | 16 | | | | | | | | | | | | |
| TVM42-20-2 | 5.5 | 7.5 | | 40 | 38 | 36 | 33 | 32 | 30 | 27 | 23 | | | | | | | | | | | | |
| TVM42-20 | 7.5 | 10 | | 48 | 46 | 44 | 42 | 41 | 39 | 35 | 31 | | | | | | | | | | | | |
| TVM42-30-2 | 11 | 15 | | 63 | 61 | 58 | 54 | 52 | 50 | 44 | 38 | | | | | | | | | | | | |
| TVM42-30 | 11 | 15 | | 71 | 69 | 66 | 63 | 61 | 58 | 53 | 47 | | | | | | | | | | | | |
| TVM42-40-2 | 15 | 20 | | 87 | 84 | 80 | 75 | 73 | 69 | 62 | 54 | | | | | | | | | | | | |
| TVM42-40 | 15 | 20 | | 95 | 92 | 88 | 84 | 81 | 78 | 71 | 62 | | | | | | | | | | | | |
| TVM42-50-2 | 18.5 | 25 | | 111 | 107 | 102 | 96 | 93 | 88 | 80 | 69 | | | | | | | | | | | | |
| TVM42-50 | 18.5 | 25 | | 119 | 115 | 110 | 105 | 101 | 97 | 88 | 78 | | | | | | | | | | | | |
| TVM42-60-2 | 22 | 30 | | 135 | 130 | 124 | 117 | 113 | 108 | 97 | 85 | | | | | | | | | | | | |
| TVM42-60 | 22 | 30 | | 143 | 138 | 132 | 125 | 122 | 116 | 106 | 93 | | | | | | | | | | | | |
| TVM42-70-2 | 30 | 40 | | 158 | 152 | 146 | 138 | 134 | 127 | 115 | 100 | | | | | | | | | | | | |
| TVM42-70 | 30 | 40 | | 166 | 161 | 154 | 146 | 142 | 135 | 124 | 109 | | | | | | | | | | | | |
| TVM42-80-2 | 30 | 40 | | 182 | 175 | 168 | 159 | 154 | 146 | 133 | 116 | | | | | | | | | | | | |
| TVM42-80 | 30 | 40 | | 190 | 184 | 176 | 167 | 162 | 154 | 141 | 124 | | | | | | | | | | | | |
| TVM42-90-2 | 30 | 40 | | 205 | 198 | 190 | 180 | 174 | 166 | 150 | 132 | | | | | | | | | | | | |
| TVM42-90 | 37 | 50 | | 214 | 207 | 198 | 188 | 183 | 174 | 159 | 140 | | | | | | | | | | | | |
| TVM42-100-2 | 37 | 50 | | 230 | 221 | 212 | 200 | 194 | 185 | 168 | 147 | | | | | | | | | | | | |
| TVM42-100 | 37 | 50 | | 238 | 230 | 220 | 209 | 203 | 193 | 177 | 155 | | | | | | | | | | | | |
| TVM42-110-2 | 45 | 60 | | 255 | 246 | 236 | 223 | 217 | 206 | 188 | 165 | | | | | | | | | | | | |
| TVM42-110 | 45 | 60 | | 263 | 255 | 244 | 232 | 225 | 214 | 196 | 173 | | | | | | | | | | | | |
| TVM42-120-2 | 45 | 60 | | 280 | 270 | 259 | 245 | 238 | 226 | 206 | 181 | | | | | | | | | | | | |
| TVM42-120 | 45 | 60 | | 289 | 280 | 268 | 255 | 247 | 236 | 216 | 190 | | | | | | | | | | | | |
| TVM42-130-2 | 45 | 60 | | 305 | 294 | 282 | 267 | 259 | 247 | 225 | 198 | | | | | | | | | | | | |

Size and Weight

| Model | Size(mm) | | | | | Weight (kg) |
|-------------|----------|---------|---------|---------|---------|-------------|
| | B1 | B2 | B1+B2 | D1 | D2 | |
| TVM42-10-1 | | | | | | |
| TVM42-10 | 561 | 315/335 | 876/896 | 197/230 | 165/188 | 83/90 |
| TVM42-20-2 | | | | | | |
| TVM42-20 | 641 | 430 | 1071 | 260 | 208 | 105/110 |
| TVM42-30-2 | | | | | | |
| TVM42-30 | 826 | 490 | 1316 | 330 | 255 | 183 |
| TVM42-40-2 | | | | | | |
| TVM42-40 | 906 | 490 | 1396 | 330 | 255 | 197 |
| TVM42-50-2 | | | | | | |
| TVM42-50 | 986 | 550 | 1536 | 330 | 255 | 221 |
| TVM42-60-2 | | | | | | |
| TVM42-60 | 1066 | 590 | 1656 | 360 | 285 | 261 |
| TVM42-70-2 | | | | | | |
| TVM42-70 | 1146 | 660 | 1806 | 400 | 310 | 320 |
| TVM42-80-2 | | | | | | |
| TVM42-80 | 1226 | 660 | 1886 | 400 | 310 | 324 |
| TVM42-90-2 | | | | | | |
| TVM42-90 | 1306 | 660 | 1966 | 400 | 310 | 328/352 |
| TVM42-100-2 | | | | | | |
| TVM42-100 | 1386 | 660 | 2046 | 400 | 310 | 355 |
| TVM42-110-2 | | | | | | |
| TVM42-110 | 1466 | 700 | 2166 | 450 | 345 | 426 |
| TVM42-120-2 | | | | | | |
| TVM42-120 | 1546 | 700 | 2246 | 450 | 345 | 432 |
| TVM42-130-2 | | | | | | |
| TVM42-130 | 1626 | 700 | 2326 | 450 | 345 | 438 |

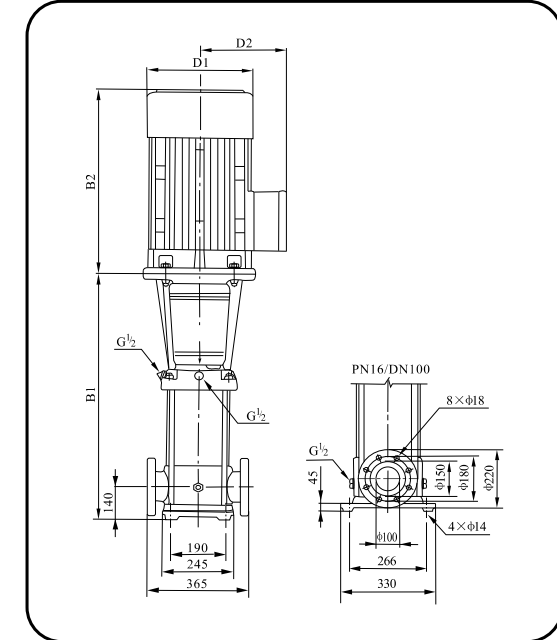
Technical Data

Performance Curve ISO9906 Annex A 2900rpm



TVM 65

Installation Sketch



Performance Table

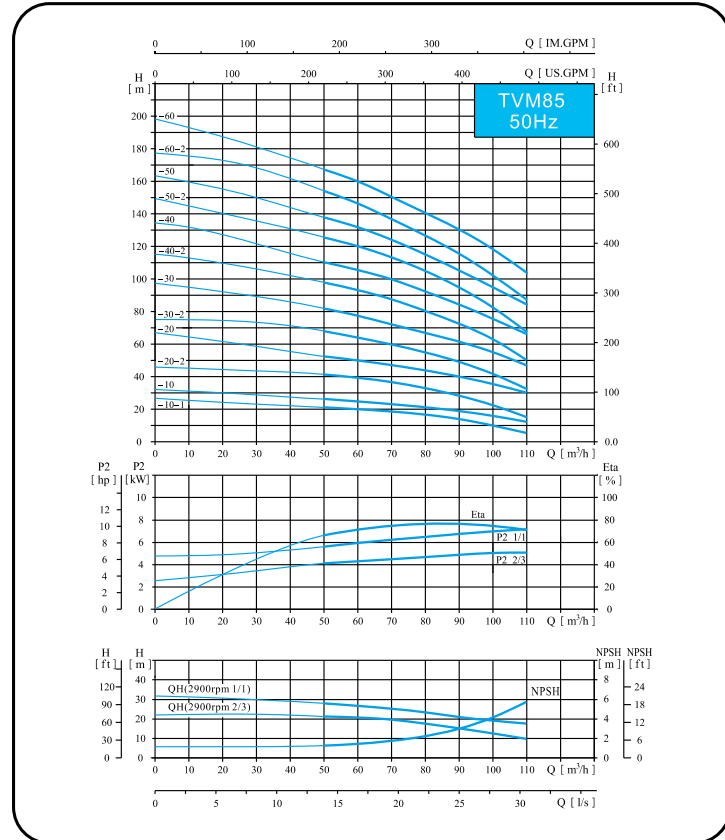
| Model | Driving Motor | | Q (m³/h) | H (m) | | | | | | | | | | | | | | | | | | | | |
|------------|---------------|------|----------|-------|-----|-----|-----|-----|-----|-----|--|--|--|--|--|--|--|--|--|--|--|--|--|--|
| | (kW) | (hp) | | 30 | 40 | 50 | 60 | 65 | 70 | 80 | | | | | | | | | | | | | | |
| TVM65-10-1 | 4.0 | 5.5 | | 19 | 18 | 16 | 14 | 13 | 11 | 8 | | | | | | | | | | | | | | |
| TVM65-10 | 5.5 | 7.5 | | 27 | 25 | 23 | 21 | 20 | 18 | 15 | | | | | | | | | | | | | | |
| TVM65-20-2 | 7.5 | 10 | | 39 | 36 | 33 | 29 | 26 | 23 | 17 | | | | | | | | | | | | | | |
| TVM65-20-1 | 11 | 15 | | 46 | 44 | 40 | 36 | 33 | 30 | 24 | | | | | | | | | | | | | | |
| TVM65-20 | 11 | 15 | | 53 | 51 | 47 | 43 | 40 | 37 | 30 | | | | | | | | | | | | | | |
| TVM65-30-2 | 15 | 20 | | 66 | 62 | 56 | 50 | 46 | 41 | 32 | | | | | | | | | | | | | | |
| TVM65-30-1 | 15 | 20 | | 73 | 69 | 63 | 57 | 53 | 48 | 39 | | | | | | | | | | | | | | |
| TVM65-30 | 18.5 | 25 | | 80 | 76 | 70 | 64 | 60 | 55 | 46 | | | | | | | | | | | | | | |
| TVM65-40-2 | 18.5 | 25 | | 92 | 87 | 80 | 71 | 66 | 60 | 47 | | | | | | | | | | | | | | |
| TVM65-40-1 | 22 | 30 | | 100 | 94 | 87 | 78 | 73 | 67 | 54 | | | | | | | | | | | | | | |
| TVM65-40 | 22 | 30 | | 107 | 101 | 94 | 85 | 80 | 74 | 61 | | | | | | | | | | | | | | |
| TVM65-50-2 | 30 | 40 | | 121 | 114 | 105 | 95 | 88 | 80 | 64 | | | | | | | | | | | | | | |
| TVM65-50-1 | 30 | 40 | | 128 | 121 | 112 | 102 | 95 | 87 | 71 | | | | | | | | | | | | | | |
| TVM65-50 | 30 | 40 | | 136 | 129 | 119 | 109 | 102 | 94 | 78 | | | | | | | | | | | | | | |
| TVM65-60-2 | 30 | 40 | | 150 | 142 | 131 | 118 | 110 | 101 | 81 | | | | | | | | | | | | | | |
| TVM65-60-1 | 37 | 50 | | 157 | 149 | 138 | 125 | 117 | 108 | 88 | | | | | | | | | | | | | | |
| TVM65-60 | 37 | 50 | | 164 | 156 | 145 | 132 | 124 | 115 | 95 | | | | | | | | | | | | | | |
| TVM65-70-2 | 37 | 50 | | 179 | 169 | 156 | 141 | 132 | 121 | 99 | | | | | | | | | | | | | | |
| TVM65-70-1 | 37 | 50 | | 186 | 176 | 163 | 148 | 139 | 128 | 106 | | | | | | | | | | | | | | |
| TVM65-70 | 45 | 60 | | 193 | 183 | 170 | 155 | 146 | 135 | 112 | | | | | | | | | | | | | | |
| TVM65-80-2 | 45 | 60 | | 207 | 196 | 182 | 164 | 154 | 142 | 116 | | | | | | | | | | | | | | |
| TVM65-80-1 | 45 | 60 | | 215 | 203 | 189 | 171 | 161 | 149 | 123 | | | | | | | | | | | | | | |

Size and Weight

| Model | Size(mm) | | | | | Weight (kg) |
|------------|----------|-----|-------|-----|-----|-------------|
| | B1 | B2 | B1+B2 | D1 | D2 | |
| TVM65-10-1 | 561 | 335 | 896 | 230 | 188 | 93 |
| TVM65-10 | 561 | 430 | 991 | 260 | 208 | 105 |
| TVM65-20-2 | 644 | 430 | 1074 | 260 | 208 | 110 |
| TVM65-20-1 | 754 | 490 | 1244 | 330 | 255 | 182 |
| TVM65-20 | 754 | 490 | 1244 | 330 | 255 | 182 |
| TVM65-30-2 | 836 | 490 | 1326 | 330 | 255 | 196 |
| TVM65-30-1 | 836 | 490 | 1326 | 330 | 255 | 197 |
| TVM65-30 | 836 | 550 | 1386 | 330 | 255 | 221 |
| TVM65-40-2 | 919 | 550 | 1469 | 330 | 255 | 225 |
| TVM65-40-1 | 919 | 590 | 1509 | 360 | 285 | 258 |
| TVM65-40 | 919 | 590 | 1509 | 360 | 285 | 258 |
| TVM65-50-2 | 1001 | 660 | 1661 | 400 | 310 | 319 |
| TVM65-50-1 | 1001 | 660 | 1661 | 400 | 310 | 320 |
| TVM65-50 | 1001 | 660 | 1661 | 400 | 310 | 325 |
| TVM65-60-2 | 1084 | 660 | 1744 | 400 | 310 | 349 |
| TVM65-60-1 | 1084 | 660 | 1744 | 400 | 310 | 349 |
| TVM65-60 | 1084 | 660 | 1744 | 400 | 310 | 353 |
| TVM65-70-2 | 1166 | 660 | 1826 | 400 | 310 | 353 |
| TVM65-70-1 | 1166 | 660 | 1826 | 400 | 310 | 420 |
| TVM65-70 | 1166 | 700 | 1866 | 460 | 340 | 424 |
| TVM65-80-2 | 1248 | 700 | 1948 | 460 | 340 | 424 |
| TVM65-80-1 | 1248 | 700 | 1948 | 460 | 340 | |

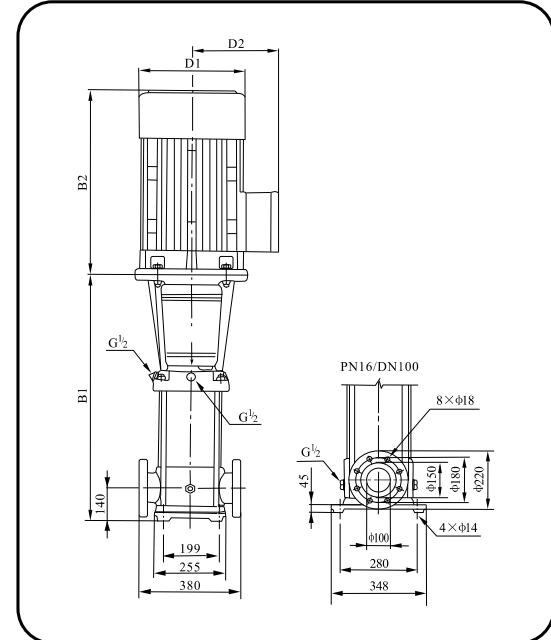
Technical Data

Performance Curve ISO9906 Annex A 2900rpm



TVM 85

Installation Sketch



Performance Table

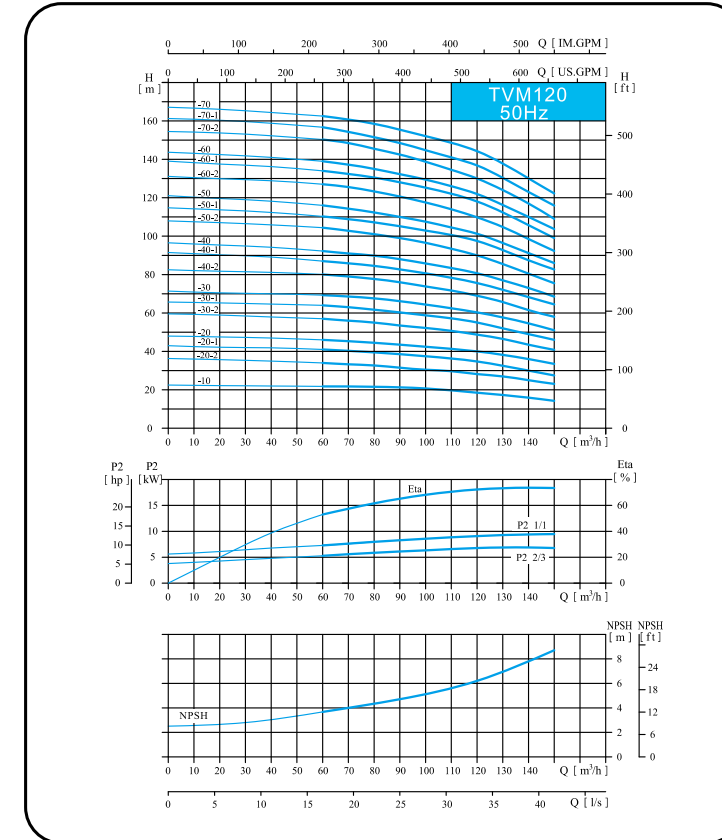
| Model | Driving Motor | | Q (m³/h) | H (m) | | | | | | | |
|------------|---------------|------|----------|-------|-----|-----|-----|-----|-----|-----|-----|
| | (kW) | (hp) | | 50 | 60 | 70 | 80 | 85 | 90 | 100 | 110 |
| TVM85-10-1 | 5.5 | 7.5 | | 22 | 19 | 17 | 16 | 14 | 13 | 10 | 6 |
| TVM85-10 | 7.5 | 10 | | 25 | 24 | 22 | 21 | 20 | 19 | 16 | 12 |
| TVM85-20-2 | 11 | 15 | | 41 | 39 | 36 | 32 | 30 | 28 | 22 | 15 |
| TVM85-20 | 15 | 20 | | 53 | 50 | 47 | 44 | 41 | 40 | 36 | 30 |
| TVM85-30-2 | 18.5 | 25 | | 68 | 65 | 60 | 55 | 52 | 49 | 41 | 32 |
| TVM85-30 | 22 | 30 | | 81 | 77 | 72 | 67 | 64 | 62 | 55 | 48 |
| TVM85-40-2 | 30 | 40 | | 98 | 93 | 87 | 80 | 75 | 72 | 62 | 50 |
| TVM85-40 | 30 | 40 | | 110 | 105 | 100 | 92 | 86 | 84 | 76 | 66 |
| TVM85-50-2 | 37 | 50 | | 126 | 120 | 113 | 104 | 98 | 93 | 81 | 68 |
| TVM85-50 | 37 | 50 | | 139 | 131 | 124 | 115 | 110 | 106 | 94 | 83 |
| TVM85-60-2 | 45 | 60 | | 155 | 148 | 139 | 129 | 122 | 117 | 102 | 86 |
| TVM85-60 | 45 | 60 | | 168 | 160 | 150 | 141 | 134 | 130 | 117 | 103 |

Size and Weight

| Model | Size(mm) | | | | | Weight (kg) |
|------------|----------|-----|-------|-----|-----|-------------|
| | B1 | B2 | B1+B2 | D1 | D2 | |
| TVM85-10-1 | 571 | 430 | 1001 | 260 | 208 | 105 |
| TVM85-10 | 571 | 430 | 1001 | 260 | 208 | 110 |
| TVM85-20-2 | 773 | 490 | 1263 | 330 | 255 | 181 |
| TVM85-20 | 773 | 490 | 1263 | 330 | 255 | 192 |
| TVM85-30-2 | 865 | 550 | 1415 | 330 | 255 | 215 |
| TVM85-30 | 865 | 590 | 1455 | 360 | 285 | 252 |
| TVM85-40-2 | 957 | 660 | 1617 | 400 | 310 | 312 |
| TVM85-40 | 957 | 660 | 1617 | 400 | 310 | 312 |
| TVM85-50-2 | 1049 | 660 | 1709 | 400 | 310 | 336 |
| TVM85-50 | 1049 | 660 | 1709 | 400 | 310 | 336 |
| TVM85-60-2 | 1141 | 700 | 1841 | 460 | 340 | 407 |
| TVM85-60 | 1141 | 700 | 1841 | 460 | 340 | 407 |

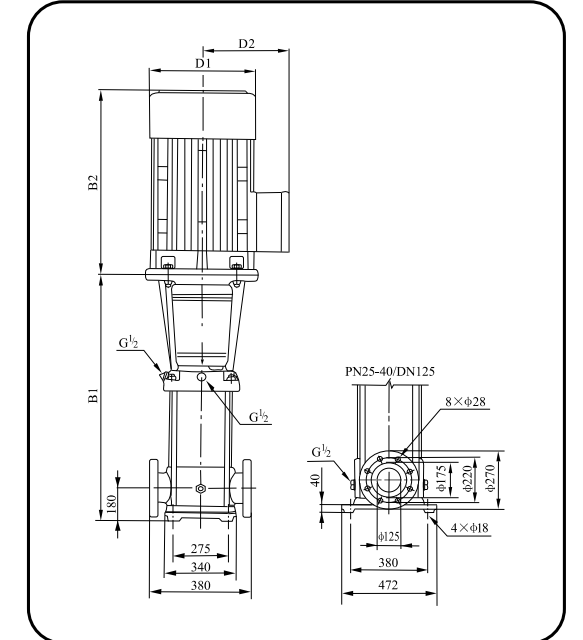
Technical Data

Performance Curve ISO9906 Annex A 2900rpm



TVM 120

Installation Sketch



Performance Table

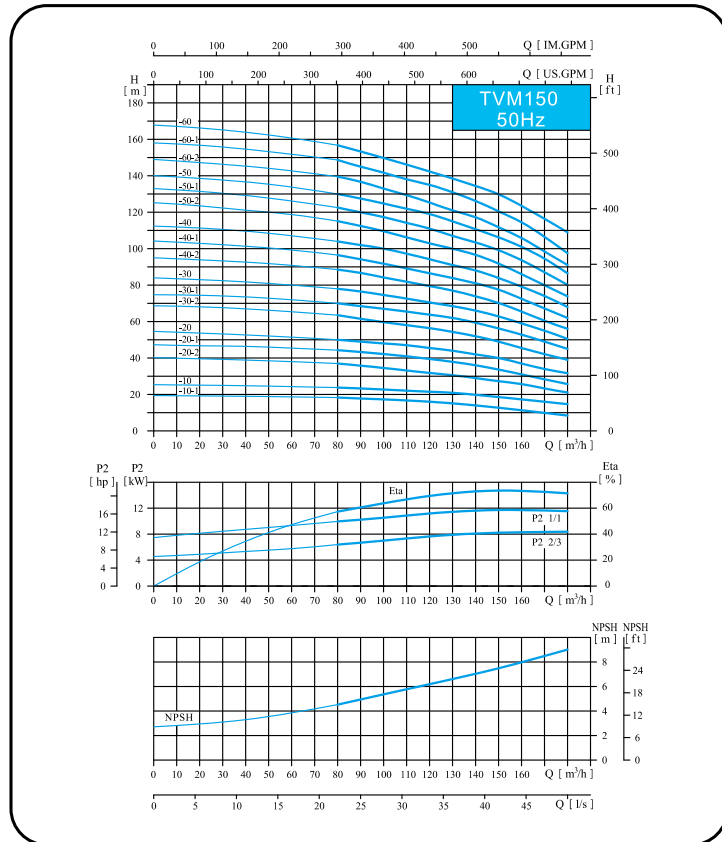
| Model | Driving Motor | | Q (m³/h) | H (m) | | | | | | | | | | | | | | |
|-------------|---------------|------|----------|-------|-------|-------|-------|-------|-------|-------|-------|-------|-------|--|--|--|--|--|
| | (kW) | (hp) | | 60 | 70 | 80 | 90 | 100 | 110 | 120 | 130 | 140 | 150 | | | | | |
| TVM120-10 | 11 | 15 | | 22 | 21.8 | 21.6 | 21 | 20.5 | 19.5 | 18.5 | 17 | 16 | 15 | | | | | |
| TVM120-20-2 | 15 | 20 | | 34 | 33.6 | 33 | 31 | 30.2 | 30 | 28.5 | 27 | 25 | 24 | | | | | |
| TVM120-20-1 | 18.5 | 25 | | 41 | 40 | 39.5 | 38.5 | 37 | 36.5 | 34.5 | 32.5 | 30 | 27.5 | | | | | |
| TVM120-20 | 22 | 30 | | 46 | 45 | 44.5 | 43.5 | 42.4 | 41 | 40 | 38 | 36 | 33.5 | | | | | |
| TVM120-30-2 | 30 | 40 | | 57 | 56 | 55 | 53.5 | 52 | 51 | 49 | 46.5 | 43.5 | 41 | | | | | |
| TVM120-30-1 | 30 | 40 | | 64 | 63 | 62 | 60 | 58.5 | 57.5 | 55.5 | 52 | 49 | 46 | | | | | |
| TVM120-30 | 30 | 40 | | 69.5 | 68.5 | 67.5 | 66 | 64.4 | 62.5 | 61 | 57.5 | 54.5 | 51 | | | | | |
| TVM120-40-2 | 37 | 50 | | 80.5 | 79 | 78 | 76 | 73.5 | 72 | 69 | 66 | 61.5 | 58 | | | | | |
| TVM120-40-1 | 37 | 50 | | 87 | 86 | 84.5 | 82 | 80 | 78 | 76 | 72 | 68 | 64.5 | | | | | |
| TVM120-40 | 45 | 60 | | 92.5 | 91 | 90 | 88 | 85.5 | 83 | 81 | 77 | 73 | 68.5 | | | | | |
| TVM120-50-2 | 45 | 60 | | 104.5 | 103 | 101 | 99 | 96 | 93 | 90 | 85.5 | 80.3 | 75.5 | | | | | |
| TVM120-50-1 | 45 | 60 | | 110.5 | 109 | 107.5 | 105 | 102 | 100 | 97 | 92 | 86.5 | 83 | | | | | |
| TVM120-50 | 55 | 75 | | 115.5 | 114 | 113 | 110 | 107.5 | 104.5 | 101.5 | 96 | 91 | 86 | | | | | |
| TVM120-60-2 | 55 | 75 | | 128 | 125.5 | 123 | 121 | 117.3 | 113.5 | 110 | 104.5 | 98.5 | 92.5 | | | | | |
| TVM120-60-1 | 55 | 75 | | 134 | 132 | 130.5 | 127 | 124 | 121 | 118 | 111 | 105 | 100 | | | | | |
| TVM120-60 | 75 | 100 | | 139 | 137 | 135 | 132 | 128.8 | 126 | 123 | 116 | 110 | 104 | | | | | |
| TVM120-70-2 | 75 | 100 | | 151 | 148 | 145.5 | 143 | 138.6 | 134 | 130 | 123.5 | 116.5 | 109 | | | | | |
| TVM120-70-1 | 75 | 100 | | 156.5 | 154 | 152 | 148.5 | 144.5 | 141 | 137.5 | 130 | 123 | 116.5 | | | | | |
| TVM120-70 | 75 | 100 | | 162.5 | 160.5 | 158.5 | 155 | 151 | 148 | 145 | 137 | 129 | 123 | | | | | |

Size and Weight

| Model | Size(mm) | | | | | Weight (kg) |
|-------------|----------|-----|-------|-----|-----|-------------|
| | B1 | B2 | B1+B2 | D1 | D2 | |
| TVM120-10 | 840 | 490 | 1330 | 330 | 255 | 230 |
| TVM120-20-2 | 1000 | 490 | 1490 | 330 | 255 | 245 |
| TVM120-20-1 | 1000 | 550 | 1550 | 330 | 255 | 250 |
| TVM120-20 | 1000 | 590 | 1590 | 360 | 285 | 285 |
| TVM120-30-2 | 1160 | 660 | 1820 | 400 | 310 | 360 |
| TVM120-30-1 | 1160 | 660 | 1820 | 400 | 310 | 360 |
| TVM120-30 | 1160 | 660 | 1820 | 400 | 310 | 360 |
| TVM120-40-2 | 1320 | 660 | 1980 | 400 | 310 | 400 |
| TVM120-40-1 | 1320 | 660 | 1980 | 400 | 310 | 400 |
| TVM120-40 | 1320 | 700 | 2020 | 460 | 340 | 460 |
| TVM120-50-2 | 1480 | 700 | 2180 | 460 | 340 | 470 |
| TVM120-50-1 | 1480 | 700 | 2180 | 460 | 340 | 470 |
| TVM120-50 | 1510 | 770 | 2280 | 540 | 370 | 575 |
| TVM120-60-2 | 1670 | 770 | 2440 | 540 | 370 | 585 |
| TVM120-60-1 | 1670 | 770 | 2440 | 540 | 370 | 585 |
| TVM120-60 | 1670 | 845 | 2515 | 580 | 410 | 705 |
| TVM120-70-2 | 1830 | 845 | 2675 | 580 | 410 | 715 |
| TVM120-70-1 | 1830 | 845 | 2675 | 580 | 410 | 715 |
| TVM120-70 | 1830 | 845 | 2675 | 580 | 410 | 715 |

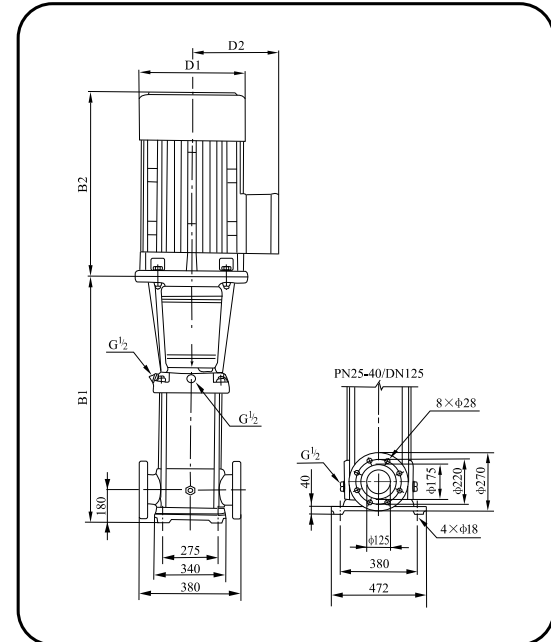
Technical Data

Performance Curve ISO9906 Annex A 2900rpm



TVM 150

Installation Sketch



Performance Table

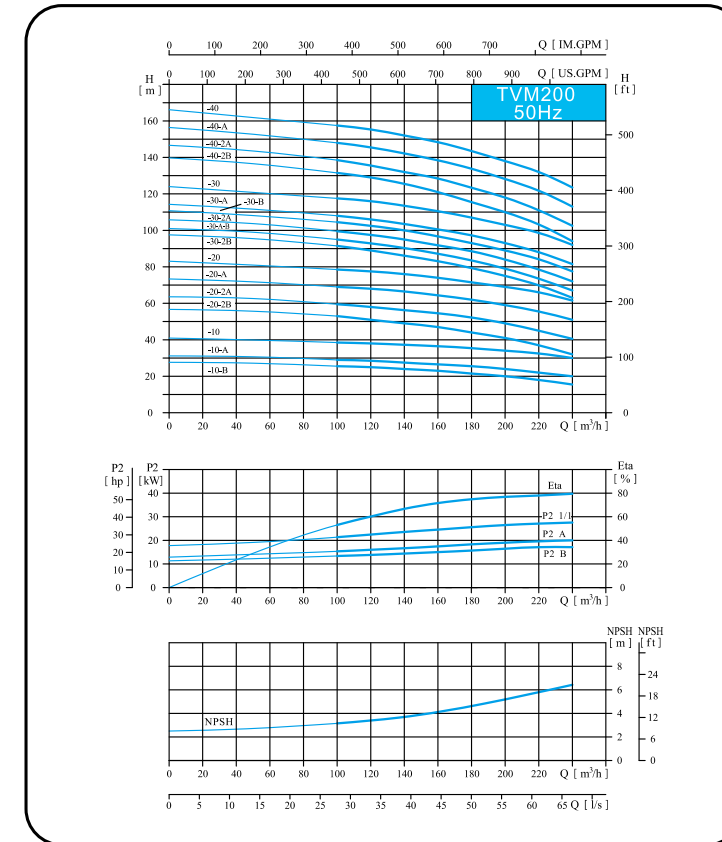
| Model | Driving Motor | | Q (m³/h) | H (m) | | | | | | | | | | | | | | |
|-------------|---------------|------|----------|-------|-------|-------|-------|-------|-------|-------|-------|-------|-------|------|--|--|--|--|
| | (kW) | (hp) | | 80 | 90 | 100 | 110 | 120 | 130 | 140 | 150 | 160 | 170 | 180 | | | | |
| TVM150-10-1 | 11 | 15 | | 18.3 | 17.8 | 17.3 | 17 | 16 | 15 | 14 | 12.5 | 11 | 10 | 8.5 | | | | |
| TVM150-10 | 15 | 20 | | 24 | 23 | 22.5 | 22 | 21.5 | 20.5 | 20 | 18.5 | 17 | 16 | 15 | | | | |
| TVM150-20-2 | 18.5 | 25 | | 37 | 35.5 | 34 | 33 | 32 | 31 | 29 | 27.5 | 26 | 23 | 21 | | | | |
| TVM150-20-1 | 22 | 30 | | 44.3 | 43 | 42 | 40 | 39 | 38.5 | 37.5 | 35 | 33 | 30 | 27 | | | | |
| TVM150-20 | 30 | 40 | | 50 | 49 | 48 | 47 | 45.5 | 44 | 42 | 40 | 37 | 34 | 32 | | | | |
| TVM150-30-2 | 30 | 40 | | 63.5 | 61 | 59 | 57.5 | 56 | 54.5 | 53 | 49 | 45.5 | 42 | 39 | | | | |
| TVM150-30-1 | 37 | 50 | | 70 | 68 | 67 | 65 | 63 | 62 | 60 | 56 | 53 | 49 | 45 | | | | |
| TVM150-30 | 37 | 50 | | 78 | 76.5 | 75 | 73 | 70.5 | 68 | 66 | 63 | 59 | 55 | 50.5 | | | | |
| TVM150-40-2 | 45 | 60 | | 89 | 87 | 84 | 81.5 | 79 | 77 | 74.5 | 70.5 | 65.5 | 60 | 56 | | | | |
| TVM150-40-1 | 45 | 60 | | 96.5 | 94 | 91.5 | 89 | 86.5 | 84 | 81.5 | 77 | 72.5 | 67 | 62 | | | | |
| TVM150-40 | 55 | 75 | | 104 | 102 | 100 | 97 | 95 | 91 | 88 | 84 | 79.5 | 74 | 68 | | | | |
| TVM150-50-2 | 55 | 75 | | 115.5 | 112 | 109 | 106 | 102.5 | 100 | 97 | 92 | 86 | 79 | 73.5 | | | | |
| TVM150-50-1 | 75 | 100 | | 122.5 | 119.5 | 117 | 113.5 | 111.5 | 107.5 | 104.5 | 99 | 93.5 | 87 | 80 | | | | |
| TVM150-50 | 75 | 100 | | 130 | 127.5 | 125 | 121 | 119 | 115 | 111.5 | 106.5 | 101 | 94.5 | 86.5 | | | | |
| TVM150-60-2 | 75 | 100 | | 140 | 137 | 133 | 130 | 126 | 121 | 118 | 112 | 106 | 98 | 91 | | | | |
| TVM150-60-1 | 75 | 100 | | 148.5 | 145 | 141.7 | 137.5 | 135 | 131 | 127 | 120.5 | 114.5 | 106.5 | 97.5 | | | | |
| TVM150-60 | 75 | 100 | | 157 | 153 | 149 | 145 | 142 | 139.5 | 137 | 130 | 123.5 | 116 | 109 | | | | |

Size and Weight

| Model | Size(mm) | | | | | Weight (kg) |
|-------------|----------|-----|-------|-----|-----|-------------|
| | B1 | B2 | B1+B2 | D1 | D2 | |
| TVM150-10-1 | 840 | 490 | 1330 | 330 | 255 | 230 |
| TVM150-10 | 840 | 490 | 1330 | 330 | 255 | 235 |
| TVM150-20-2 | 1000 | 550 | 1550 | 330 | 255 | 250 |
| TVM150-20-1 | 1000 | 590 | 1590 | 360 | 285 | 295 |
| TVM150-20 | 1000 | 660 | 1660 | 400 | 310 | 350 |
| TVM150-30-2 | 1160 | 660 | 1820 | 400 | 310 | 360 |
| TVM150-30-1 | 1160 | 660 | 1820 | 400 | 310 | 360 |
| TVM150-30 | 1160 | 660 | 1820 | 400 | 310 | 385 |
| TVM150-40-2 | 1320 | 700 | 2020 | 460 | 340 | 460 |
| TVM150-40-1 | 1320 | 700 | 2020 | 460 | 340 | 460 |
| TVM150-40 | 1350 | 770 | 2120 | 540 | 370 | 560 |
| TVM150-50-2 | 1510 | 770 | 2280 | 540 | 370 | 570 |
| TVM150-50-1 | 1510 | 845 | 2355 | 580 | 410 | 690 |
| TVM150-50 | 1510 | 845 | 2355 | 580 | 410 | 690 |
| TVM150-60-2 | 1670 | 845 | 2515 | 580 | 410 | 700 |
| TVM150-60-1 | 1670 | 845 | 2515 | 580 | 410 | 700 |
| TVM150-60 | 1670 | 845 | 2515 | 580 | 410 | 700 |

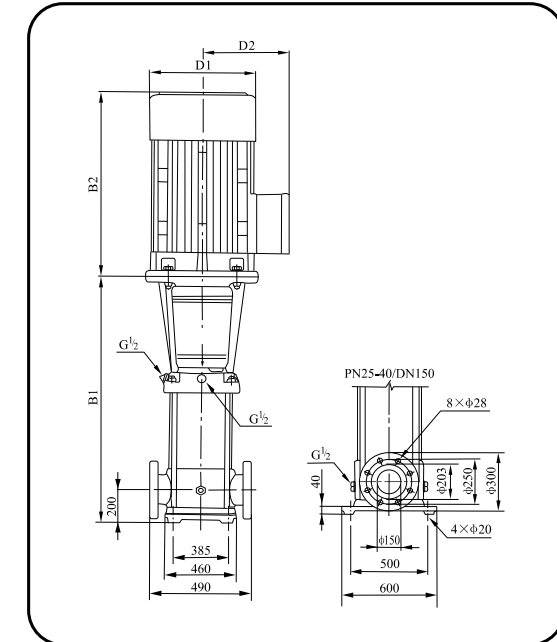
Technical Data

Performance Curve ISO9906 Annex A 2900rpm



TVM 200

Installation Sketch



Performance Table

| Model | Driving Motor | | Q (m³/h) | H (m) | | | | | | | | | | | | | | |
|---------------|---------------|------|----------|-------|-------|-------|-------|-------|-----|-------|-------|--|--|--|--|--|--|--|
| | (kW) | (hp) | | 100 | 120 | 140 | 160 | 180 | 200 | 220 | 240 | | | | | | | |
| TVM200-10-B | 18.5 | 25 | | 25.5 | 25 | 24 | 23 | 21.5 | 20 | 18 | 15.5 | | | | | | | |
| TVM200-10-A | 22 | 30 | | 29 | 28.5 | 27.5 | 26.5 | 25.5 | 24 | 22 | 20 | | | | | | | |
| TVM200-10 | 30 | 40 | | 38.5 | 38 | 37.5 | 36.5 | 35 | 34 | 32.5 | 30 | | | | | | | |
| TVM200-20-2B | 37 | 50 | | 53 | 51 | 49 | 47 | 44 | 41 | 37 | 32 | | | | | | | |
| TVM200-20-2A | 45 | 60 | | 59.5 | 58 | 56 | 54 | 52.5 | 49 | 44.5 | 40.5 | | | | | | | |
| TVM200-20-A | 55 | 75 | | 69 | 68 | 66 | 64 | 62 | 59 | 55.5 | 51 | | | | | | | |
| TVM200-20 | 55 | 75 | | 78.5 | 77.5 | 76 | 74 | 71.5 | 69 | 66 | 61.5 | | | | | | | |
| TVM200-30-2B | 75 | 100 | | 91.5 | 89 | 86.5 | 83.5 | 79 | 75 | 70 | 63 | | | | | | | |
| TVM200-30-A-B | 75 | 100 | | 95 | 93 | 90 | 87 | 83.5 | 79 | 73.5 | 67 | | | | | | | |
| TVM200-30-2A | 75 | 100 | | 99.5 | 97.5 | 94.5 | 91.5 | 89 | 84 | 78.5 | 72 | | | | | | | |
| TVM200-30-B | 75 | 100 | | 104.5 | 102.5 | 100 | 97 | 93 | 89 | 84.5 | 77.5 | | | | | | | |
| TVM200-30-A | 75 | 100 | | 108 | 106 | 103.5 | 100.5 | 97.5 | 93 | 88 | 81.5 | | | | | | | |
| TVM200-30 | 90 | 120 | | 117.5 | 116 | 113.5 | 110.5 | 107 | 103 | 99 | 92 | | | | | | | |
| TVM200-40-2B | 90 | 120 | | 131.5 | 129 | 125.5 | 121 | 115.5 | 110 | 103.5 | 94 | | | | | | | |
| TVM200-40-2A | 110 | 150 | | 138.5 | 136 | 132 | 128 | 124 | 118 | 111 | 102.5 | | | | | | | |
| TVM200-40-A | 110 | 150 | | 148 | 145.5 | 142.5 | 138 | 134 | 128 | 122 | 113 | | | | | | | |
| TVM200-40 | 110 | 150 | | 157.5 | 155.5 | 152.5 | 148 | 143.5 | 138 | 132.5 | 123.5 | | | | | | | |

Size and Weight

| Model | Size(mm) | | | | | Weight (kg) |
|---------------|----------|------|-------|-----|-----|-------------|
| | B1 | B2 | B1+B2 | D1 | D2 | |
| TVM200-10-B | 907 | 550 | 1457 | 330 | 255 | 311 |
| TVM200-10-A | 907 | 590 | 1497 | 360 | 285 | 347 |
| TVM200-10 | 907 | 660 | 1567 | 400 | 310 | 403 |
| TVM200-20-2B | 1101 | 660 | 1761 | 400 | 310 | 447 |
| TVM200-20-2A | 1101 | 700 | 1801 | 460 | 340 | 504 |
| TVM200-20-A | 1131 | 770 | 1901 | 540 | 370 | 595 |
| TVM200-20 | 1131 | 770 | 1901 | 540 | 370 | 595 |
| TVM200-30-2B | 1325 | 845 | 2170 | 580 | 410 | 748 |
| TVM200-30-A-B | 1325 | 845 | 2170 | 580 | 410 | 748 |
| TVM200-30-2A | 1325 | 845 | 2170 | 580 | 410 | 748 |
| TVM200-30-B | 1325 | 845 | 2170 | 580 | 410 | 748 |
| TVM200-30-A | 1325 | 845 | 2170 | 580 | 410 | 748 |
| TVM200-30 | 1325 | 895 | 2220 | 580 | 410 | 817 |
| TVM200-40-2B | 1519 | 895 | 2414 | 580 | 410 | 830 |
| TVM200-40-2A | 1519 | 1140 | 2659 | 645 | 550 | 1180 |
| TVM200-40-A | 1519 | 1140 | 2659 | 645 | 550 | 1180 |
| TVM200-40 | 1519 | 1140 | 2659 | 645 | 550 | 1180 |

Архангельск (8182)63-90-72
Астана (7172)727-132
Астрахань (8512)99-46-04
Барнаул (3852)73-04-60
Белгород (4722)40-23-64
Брянск (4832)59-03-52
Владивосток (423)249-28-31
Волгоград (844)278-03-48
Вологда (8172)26-41-59
Воронеж (473)204-51-73
Екатеринбург (343)384-55-89
Иваново (4932)77-34-06

Ижевск (3412)26-03-58
Иркутск (395)279-98-46
Казань (843)206-01-48
Калининград (4012)72-03-81
Калуга (4842)92-23-67
Кемерово (3842)65-04-62
Киров (8332)68-02-04
Краснодар (861)203-40-90
Красноярск (391)204-63-61
Курск (4712)77-13-04
Липецк (4742)52-20-81
Киргизия (996)312-96-26-47

Магнитогорск (3519)55-03-13
Москва (495)268-04-70
Мурманск (8152)59-64-93
Набережные Челны (8552)20-53-41
Нижний Новгород (831)429-08-12
Новокузнецк (3843)20-46-81
Новосибирск (383)227-86-73
Омск (3812)21-46-40
Орел (4862)44-53-42
Оренбург (3532)37-68-04
Пенза (8412)22-31-16
Казахстан (772)734-952-31

Пермь (342)205-81-47
Ростов-на-Дону (863)308-18-15
Рязань (4912)46-61-64
Самара (846)206-03-16
Санкт-Петербург (812)309-46-40
Саратов (845)249-38-78
Севастополь (8692)22-31-93
Симферополь (3652)67-13-56
Смоленск (4812)29-41-54
Сочи (862)225-72-31
Ставрополь (8652)20-65-13
Таджикистан (992)427-82-92-69

Сургут (3462)77-98-35
Тверь (4822)63-31-35
Томск (3822)98-41-53
Тула (4872)74-02-29
Тюмень (3452)66-21-18
Ульяновск (8422)24-23-59
Уфа (347)229-48-12
Хабаровск (4212)92-98-04
Челябинск (351)202-03-61
Череповец (8202)49-02-64
Ярославль (4852)69-52-93

<https://tsurumi.nt-rt.ru/> || tmy@nt-rt.ru